

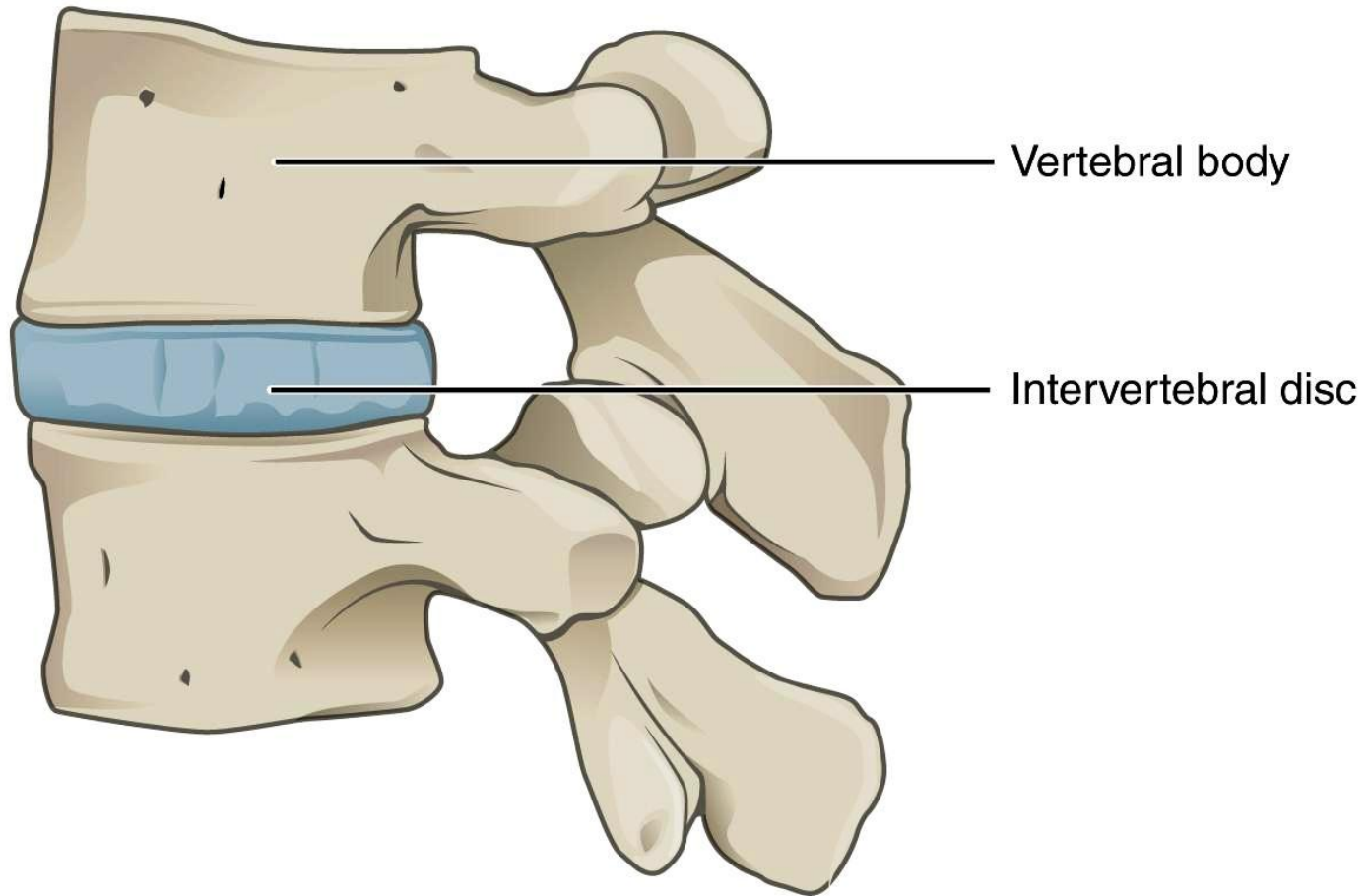
# **ANATOMY OF INTERVERTEBRAL DISC**

**DR GANGADHAR CH**  
**III YEAR PG**  
**DEPARTMENT OF ANATOMY**

# **CONTENTS**

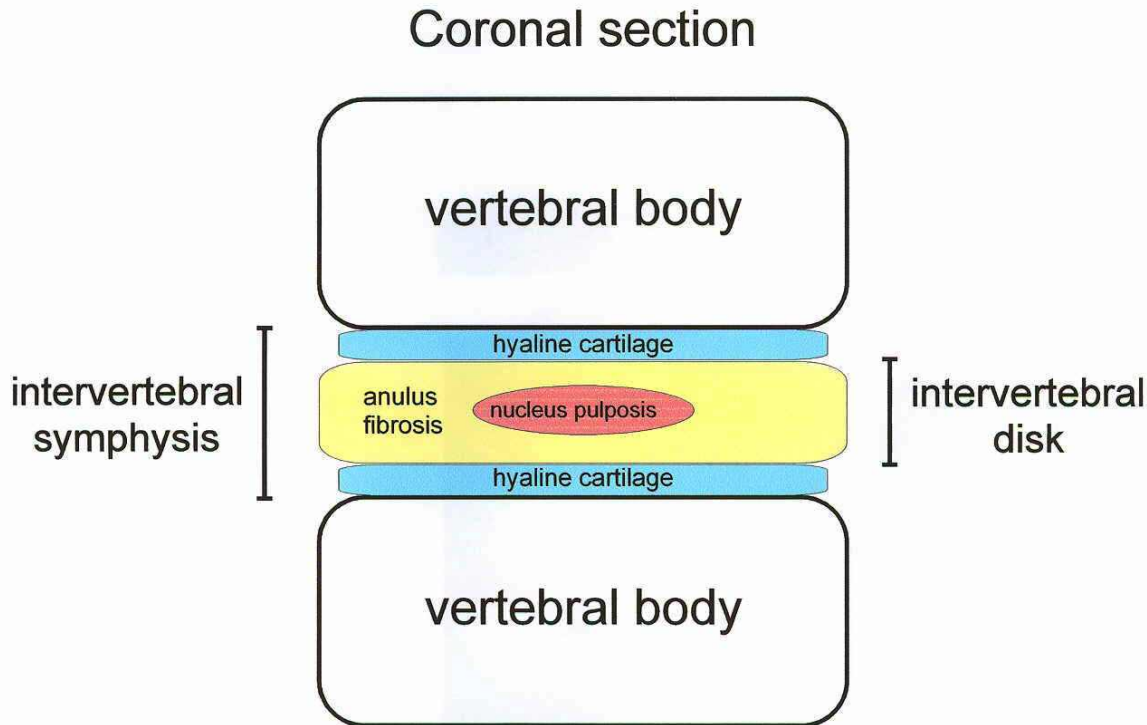
- **INTRODUCTION TO INTERVERTEBRAL DISC**
- **LOCATION OF INTERVERTEBRAL DISC**
- **RELATIONS OF INTERVERTEBRAL DISC**
- **STRUCTURE OF INTERVERTEBRAL DISC**
- **NUTRITION**
- **APPLIED ASPECTS**

# INTRODUCTION TO INTERVERTEBRAL DISC

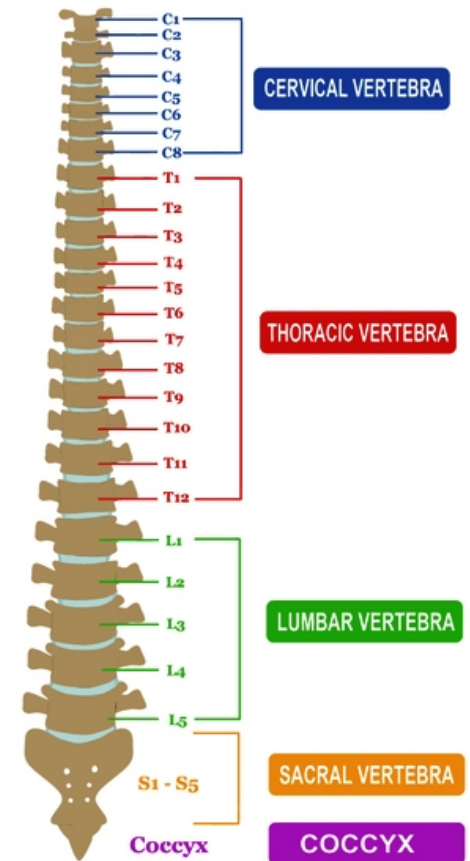


Lateral view

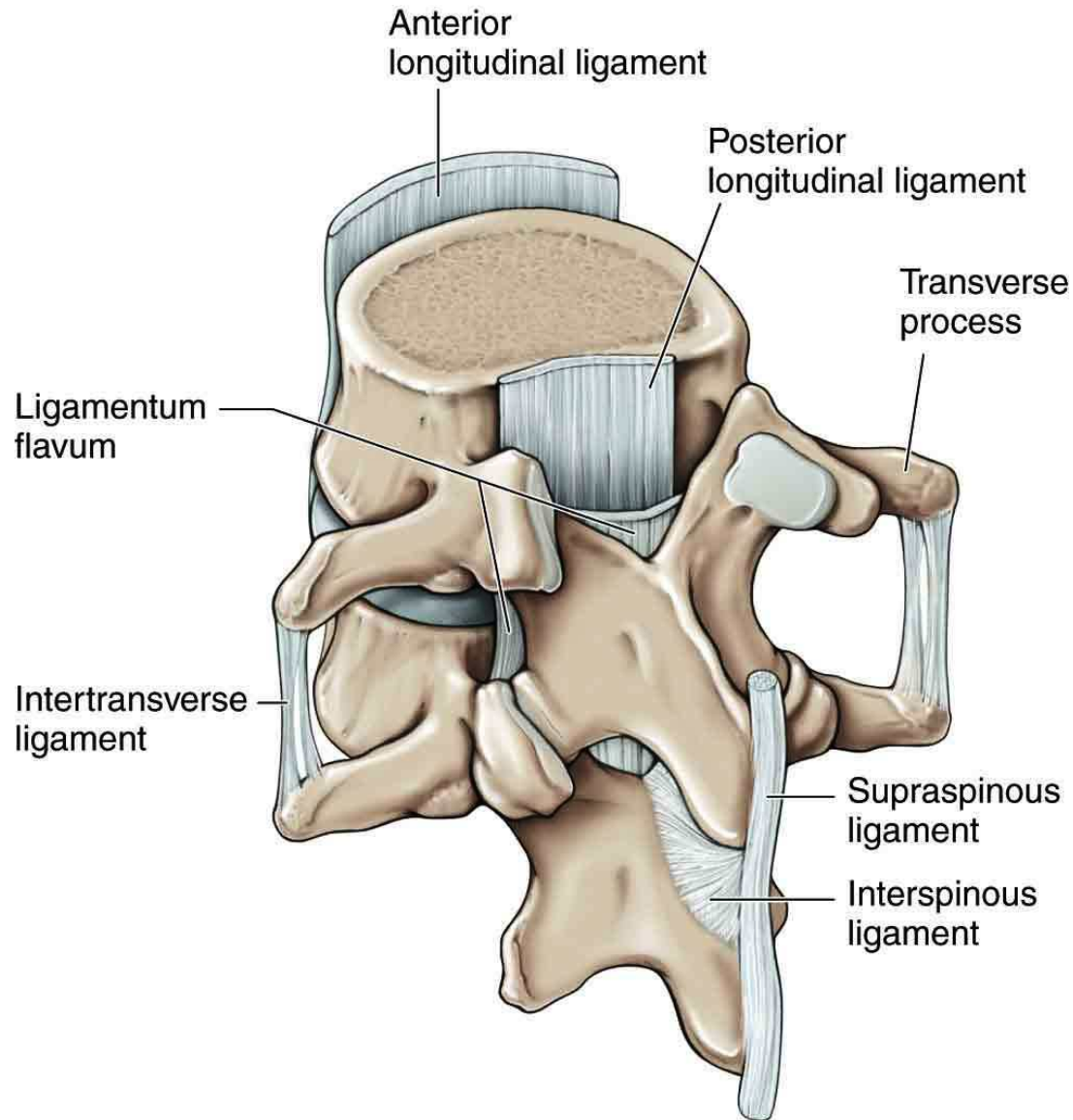
# LOCATION OF INTERVERTEBRAL DISC



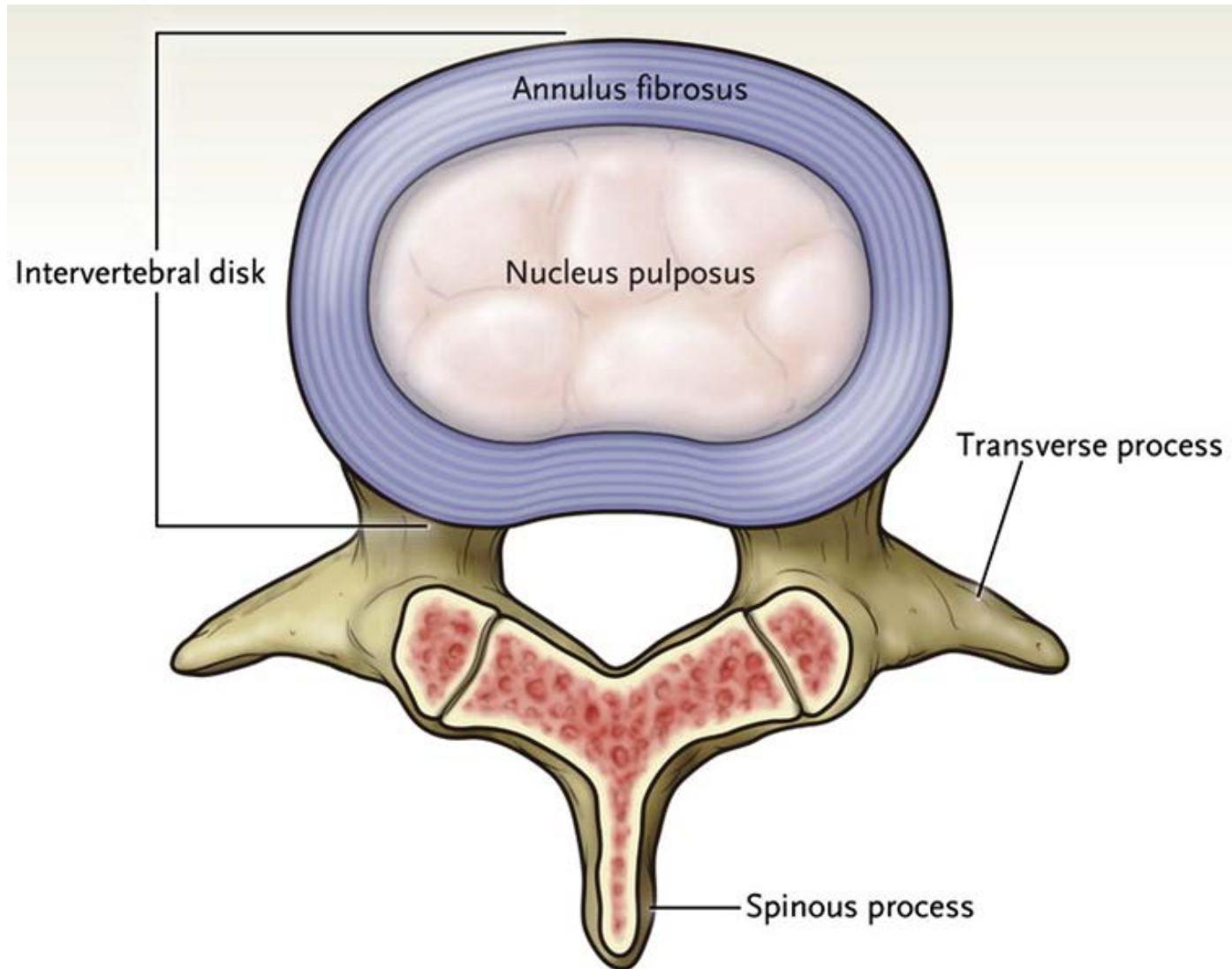
## VERTEBRAL COLUMN



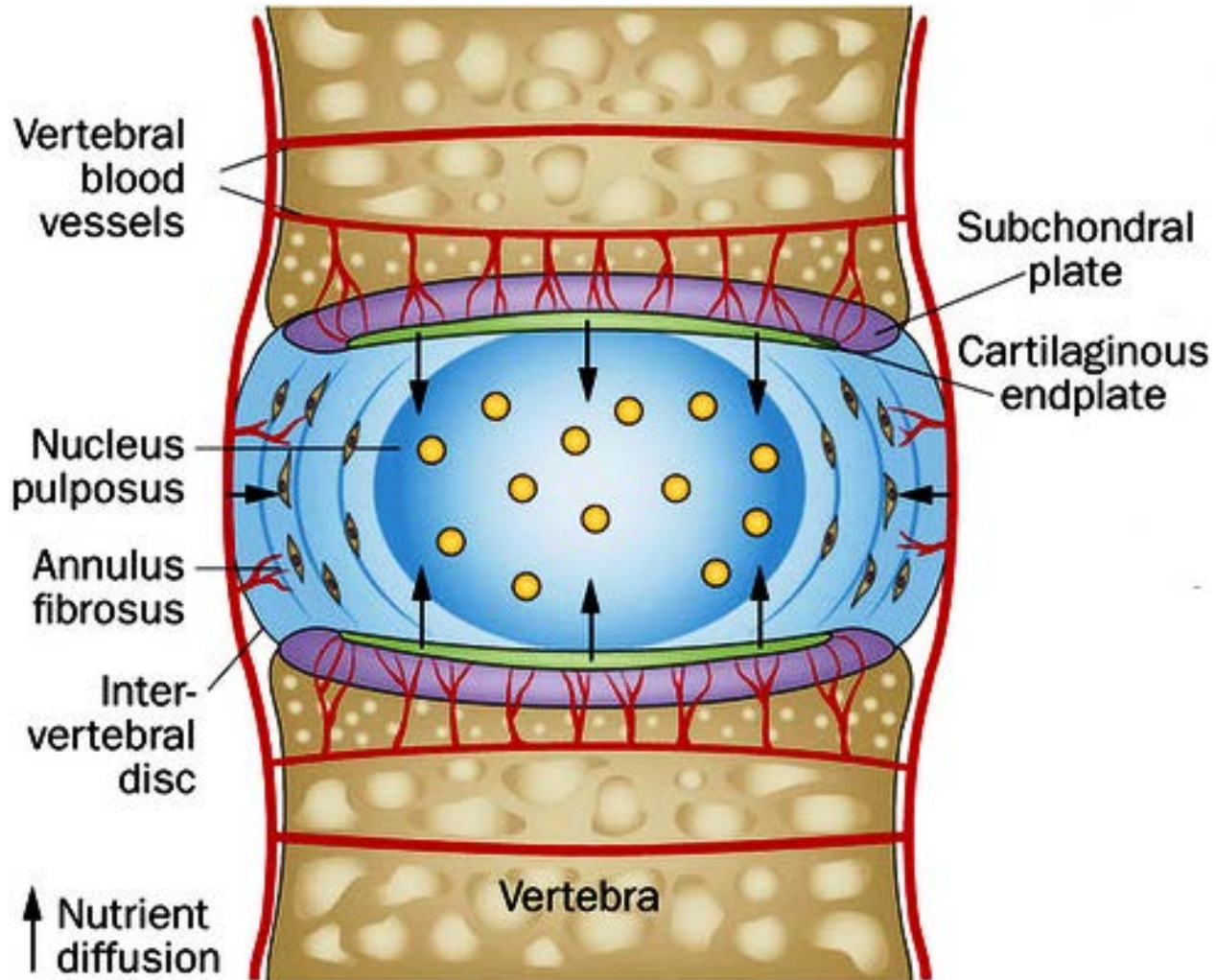
# RELATIONS OF INTERVERTEBRAL DISC



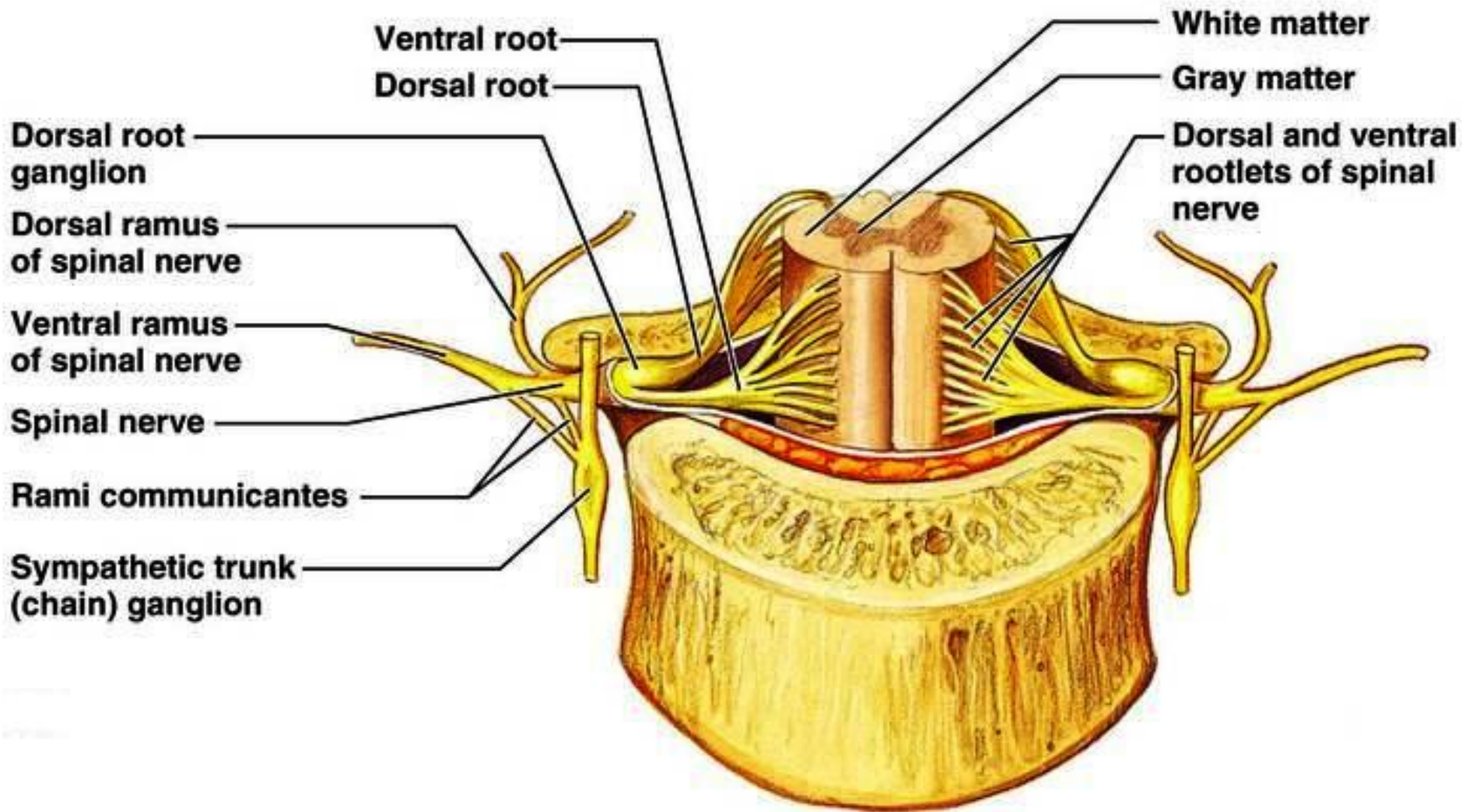
# STRUCTURE OF INTERVERTEBRAL DISC



# NUTRITION

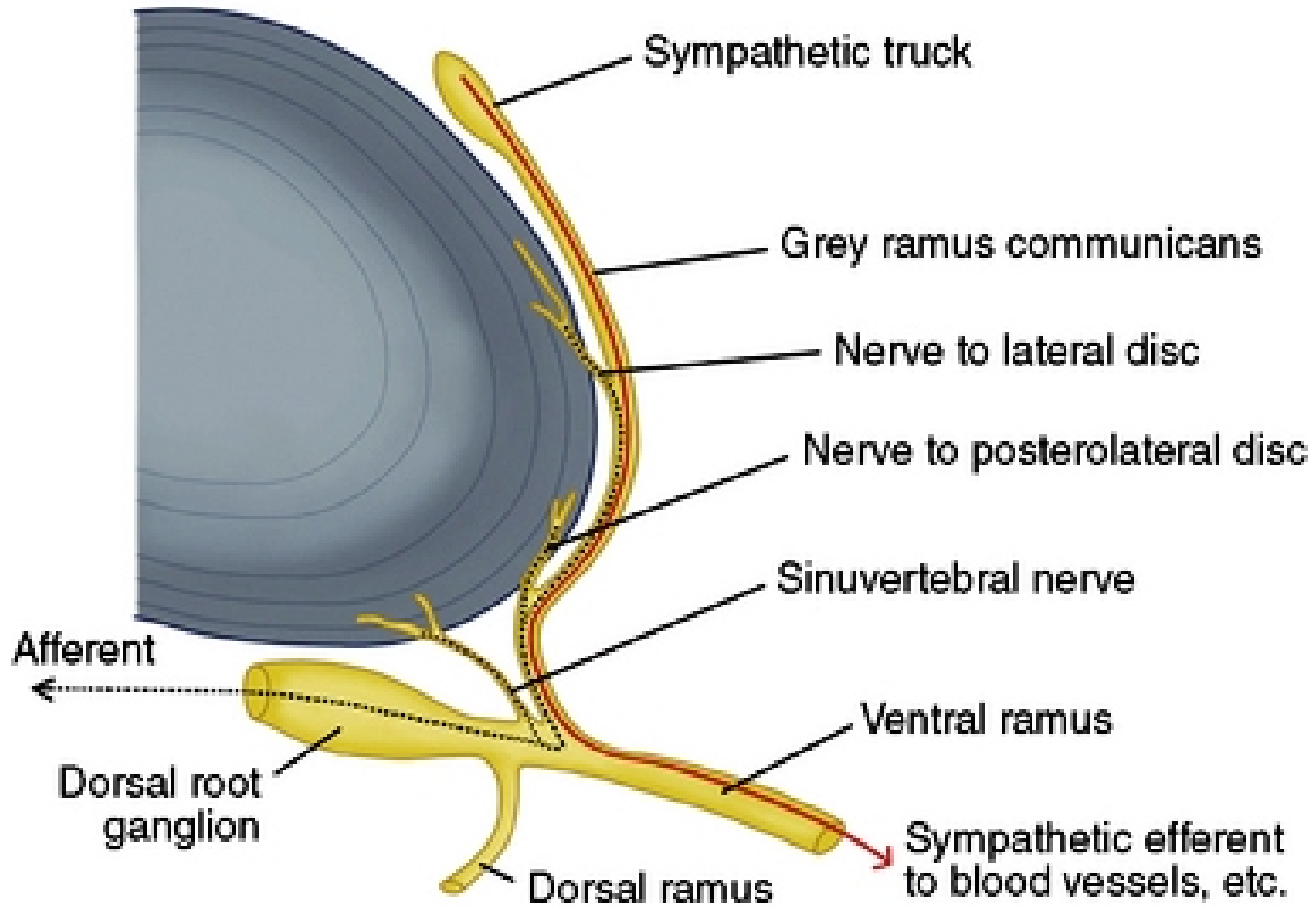




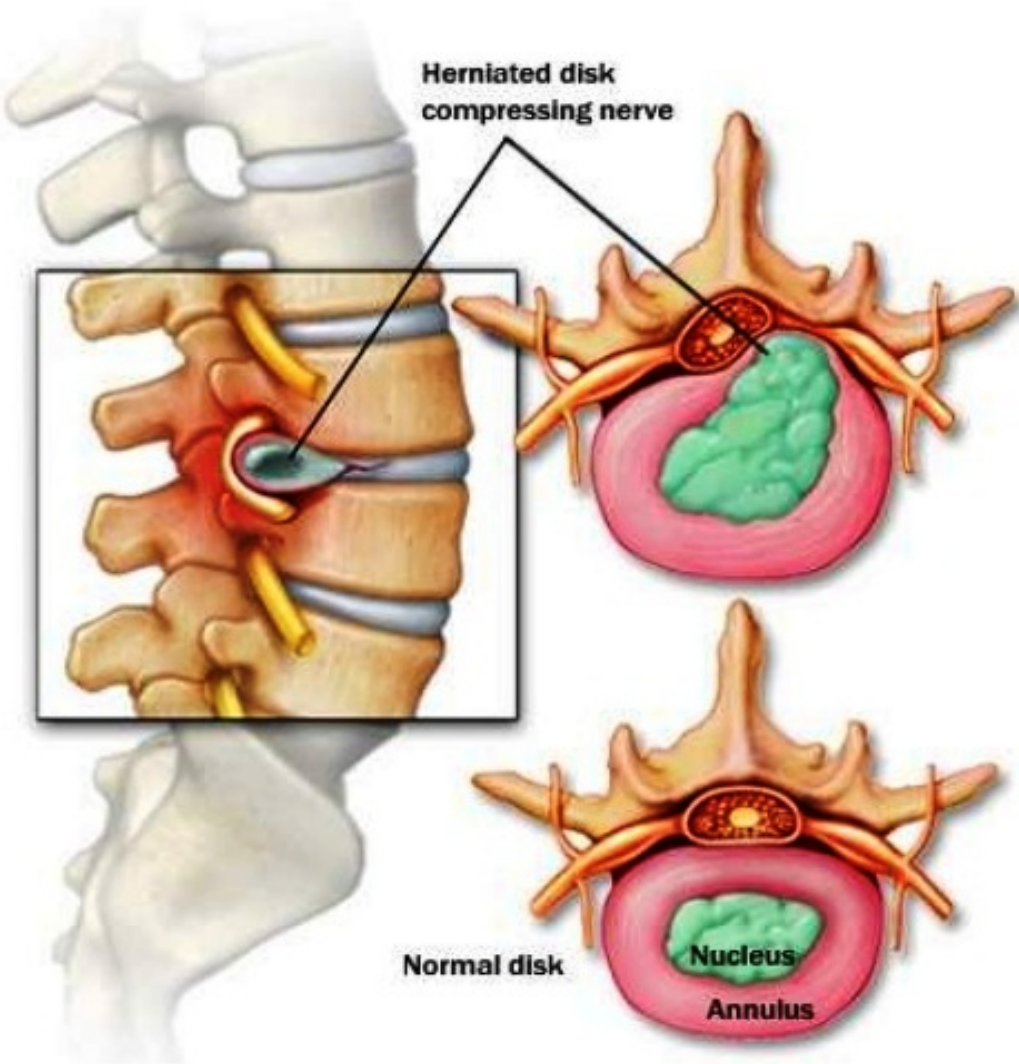
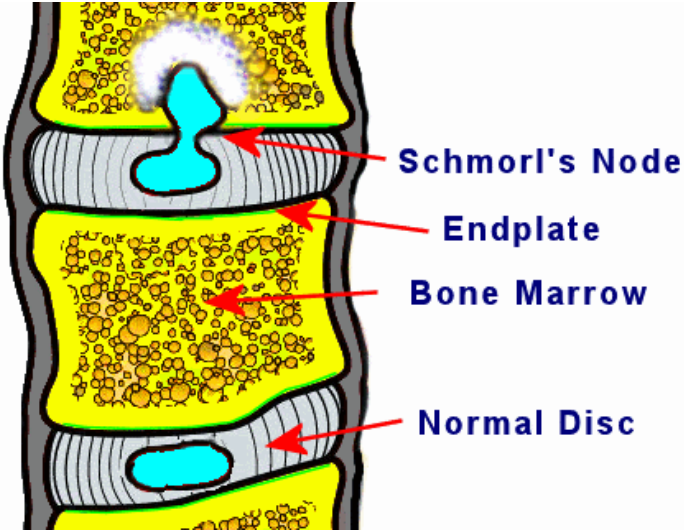




# NERVE SUPPLY



# APPLIED ASPECTS



Thinning Disc

Disc Degeneration with  
Osteophyte Formation



**THANK YOU**