

# PAIN MANAGEMENT OF PANCREATITIS IN EMERGENCY DEPARTMENT



**ACUTE**

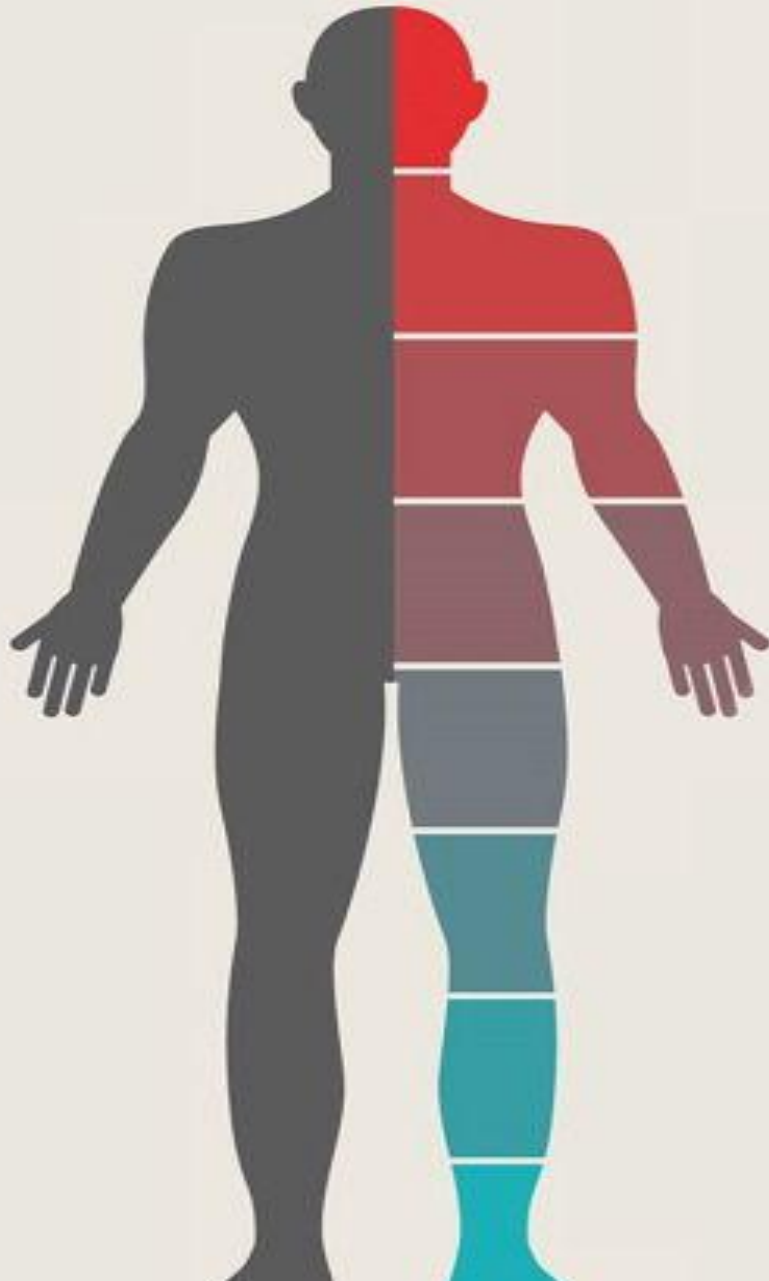
**PAIN**

**ONE OF THE MOST  
UNDERESTIMATED  
HEALTH CARE  
PROBLEMS IN  
THE WORLD TODAY**



**PAIN**

**effects BY stress on the body**



**Mood issues including anger, depression, irritability. Lack of energy, concentration problems, sleeping issues, headaches. Mental issues including anxiety disorders and panic attacks.**



**Increased blood pressure, increased heart rate, higher cholesterol and risk of heart attack**



**In the immune system, there is reduced ability to fight and recover from illness**



**Stomach cramps, reflux, and nausea**



**Loss of libido, lower sperm production for men, and increased period pain for women**



**Aches and pains in the joint and muscles**



**Lower bone density**

**Pain**

**Myositis**

**Muscle  
Guarding**

**Muscle  
Spasm**

**CYCLE  
OF  
PAIN**

**Circulatory  
Stasis**

**Restricted  
Movement**

**Retention of  
Metabolites**

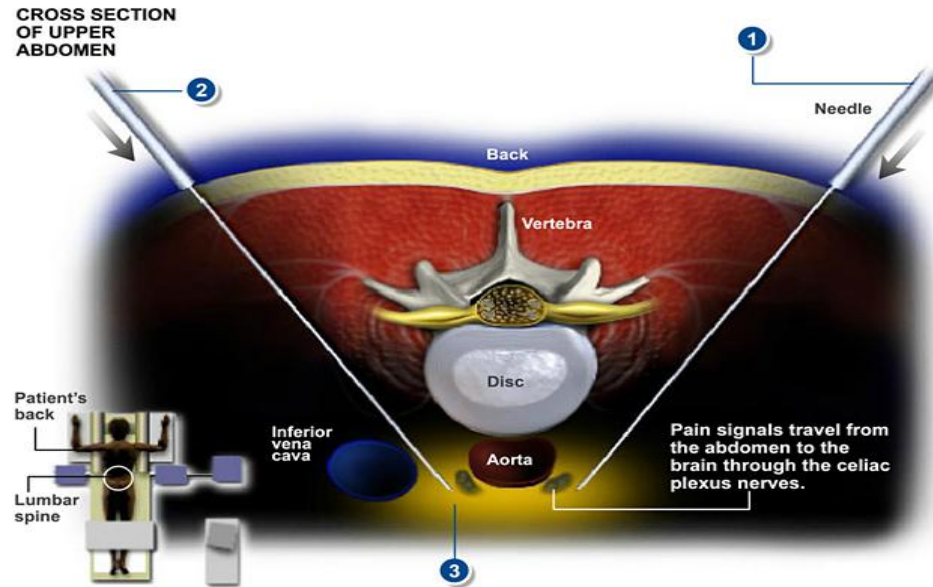


A photograph of two women jumping joyfully on a beach at sunset. The sky is filled with warm, orange and yellow clouds, and the sun is low on the horizon. The women are silhouetted against the bright light, with their hair flying in the air. The ocean waves are visible in the foreground.

# **PAIN MANAGEMENT AND RELIEF**

hypnosislive

# CELIAC PLEXUS BLOCK



EMERGENCY PAIN MANAGEMENT  
FOR  
PANCREATITIS

# CASE SCENAREO



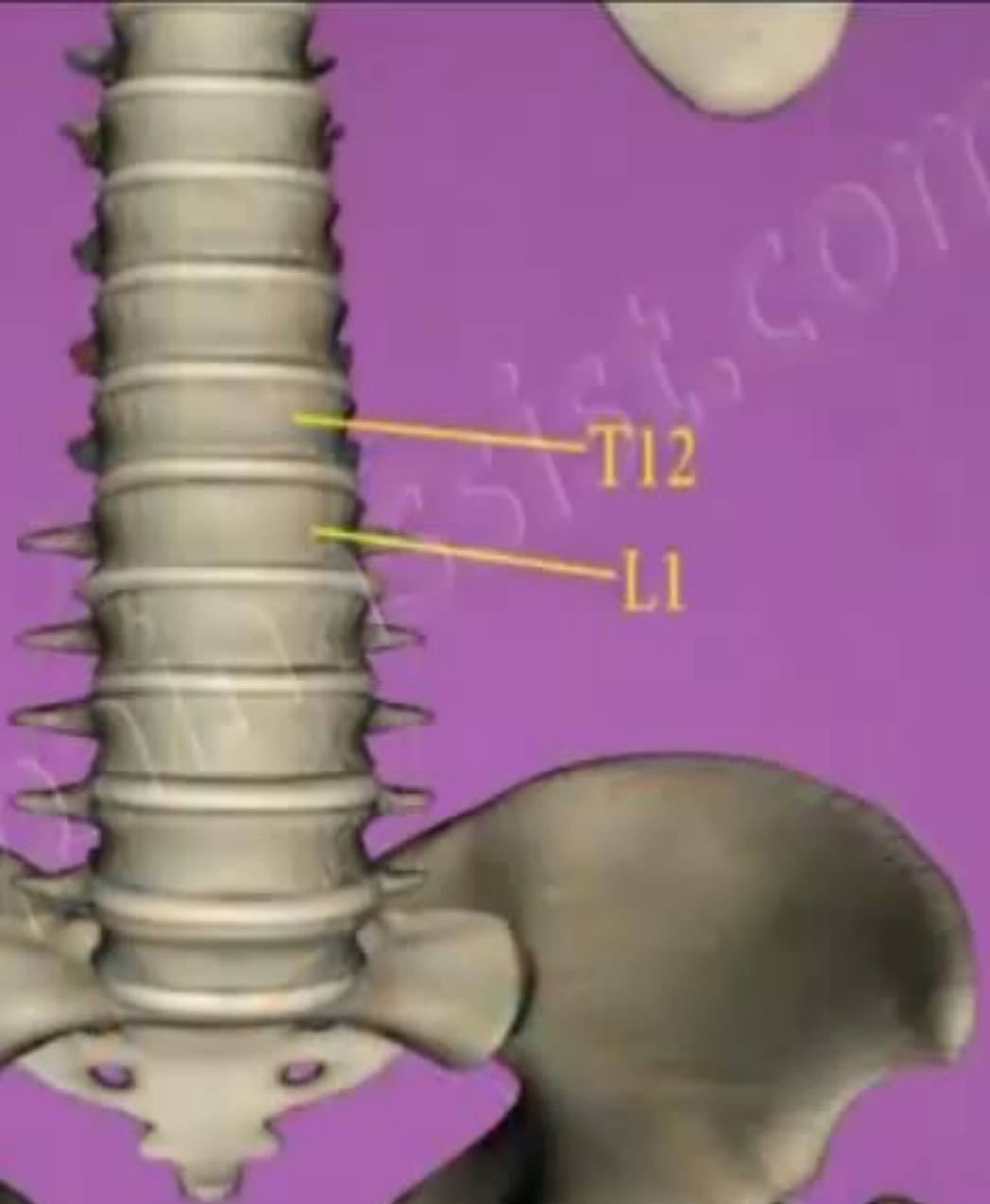
**Pain score of 80% -VAS**

# COELIAC PLEXUS BLOCK



**STOP PAIN**



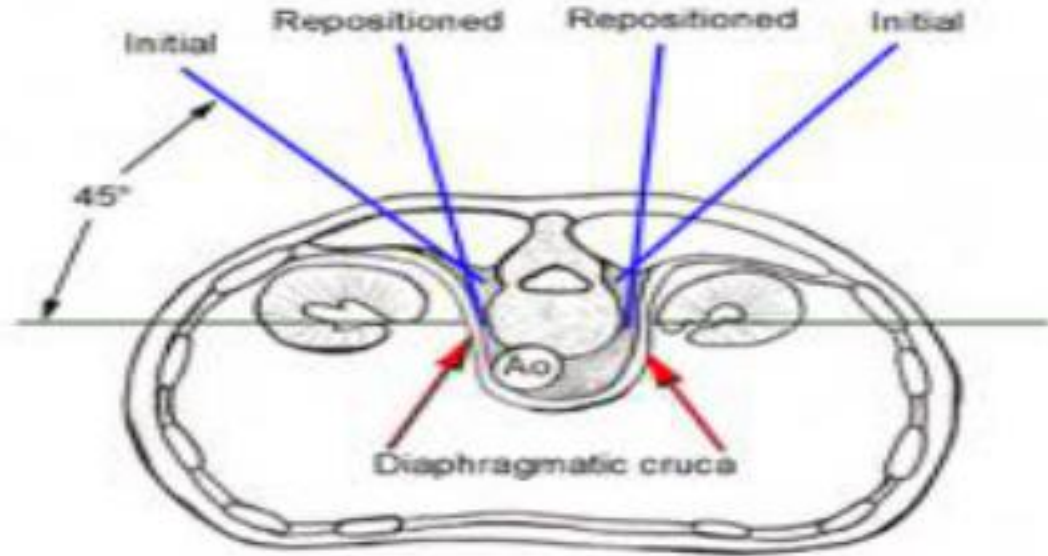
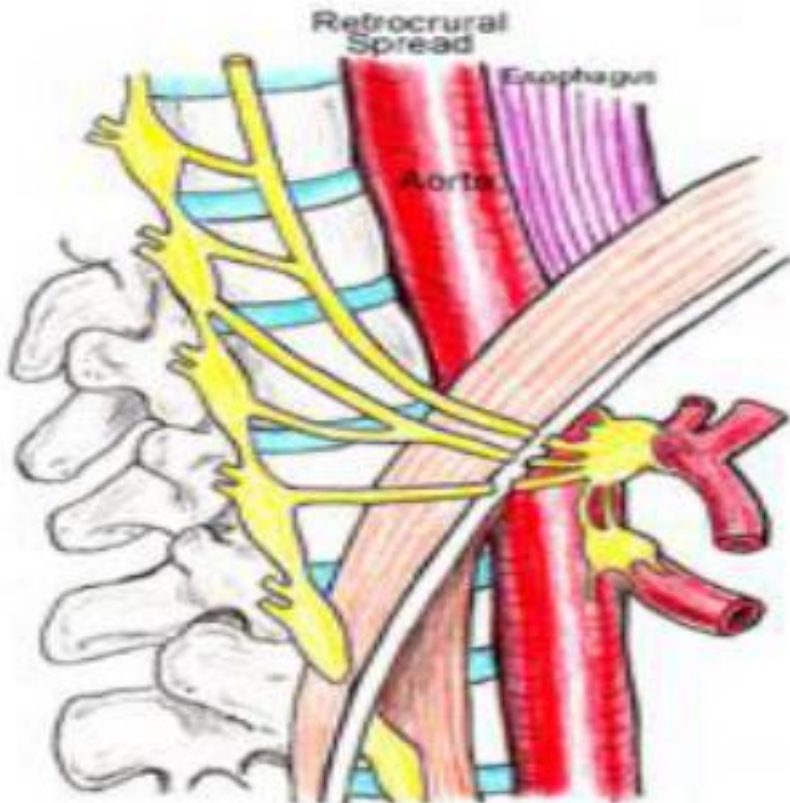


T12  
L1

**Coeliac Plexus :**

The coeliac plexus is also known as the solar plexus.

# RETROCRURAL APPROACH





Patient is brought in the operating room. Advised to lie in prone position with pillow under abdomen



# OUTCOME

- Very effective block
- 95-100% pain relief for nearly 14 to 16 hrs is observed.
- On Follow up- pain relief, increased quality of life for nearly 6 months.

TECHNICAL	PHYSIOLOGICAL
<p>Damage to somatic nerves</p> <ul style="list-style-type: none"><li>-Parathesia /Defecit of lumbar somatic nerves</li></ul>	<ul style="list-style-type: none"><li>-Hypotension (ORTHOSTATIC)</li><li>-Coeliac plexus ablation by neurolysis.</li></ul>
<p>Penetration of intervertebral foramin (if the needle is inserted too posterior)</p> <ul style="list-style-type: none"><li>-Dural drip</li><li>-Epidural injection</li><li>-Paraplegia</li></ul>	<ul style="list-style-type: none"><li>-Urinary incontinance</li><li>-Failure of ejaculation</li><li>-Impotence</li><li>-Diorrhea(unopposed parasympathetic activity)</li></ul>

## TECHNICAL

Trauma to closely related great vessels

- Intravascular injection (venous / arterial)
- Vascular wall trauma
- Vascular thrombosis / embolism
- Necrosis of intervening tissue -Aorto-duodenal fistula

## PHYSIOLOGICAL

**Others –**

Shoulder tip pain / back pain,  
Groin numbness / seizures/loss of consciousness

# TECHNICAL

- Needle injury
- Intradiscal injection
- Renal injury
- Pneumothorax / chylothorax
- Perforation of cyst / tumors
- Injection of psoas muscle
- Retroperitoneal haematoma

# PHYSIOLOGICAL

- **Infection, Abscess, Peritonitis**



Talent wins games, but  
teamwork and intelligence  
wins championships.

- Michael Jordan