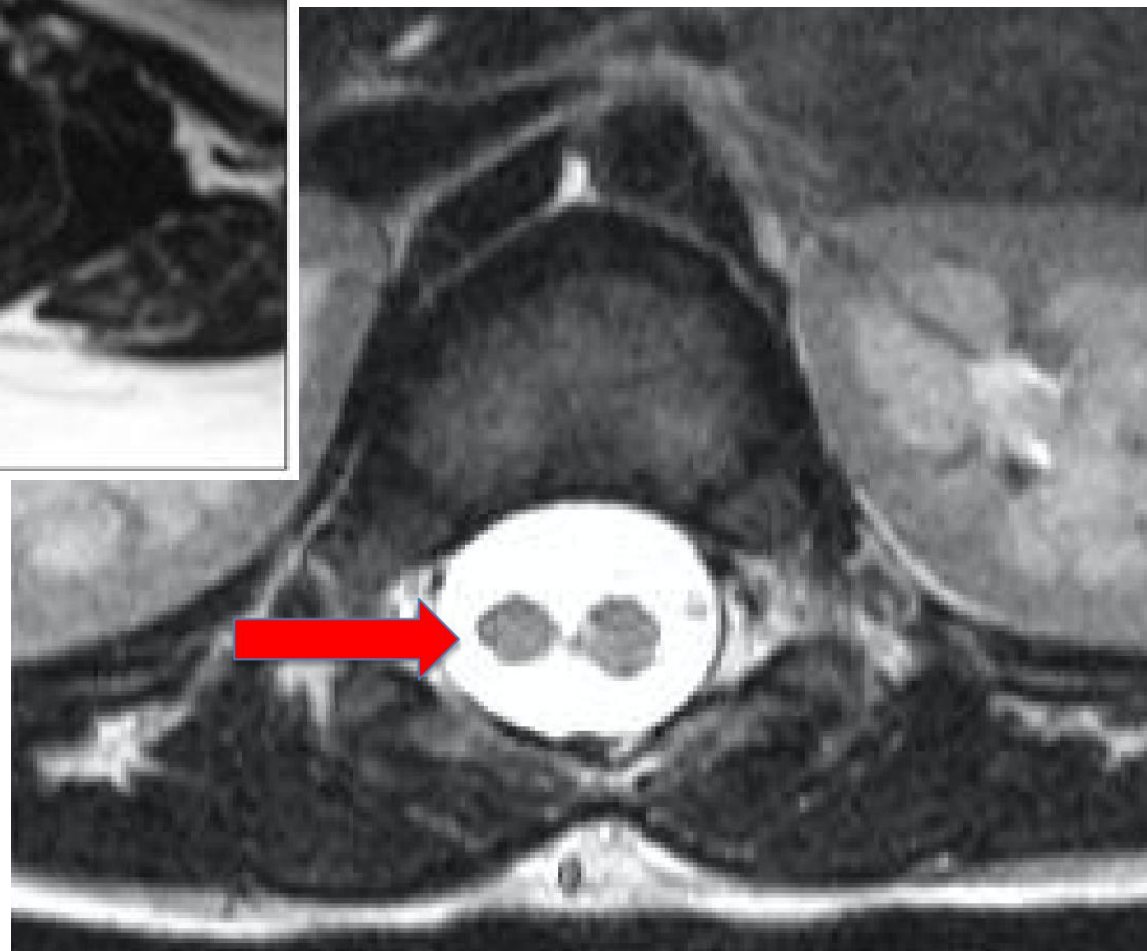
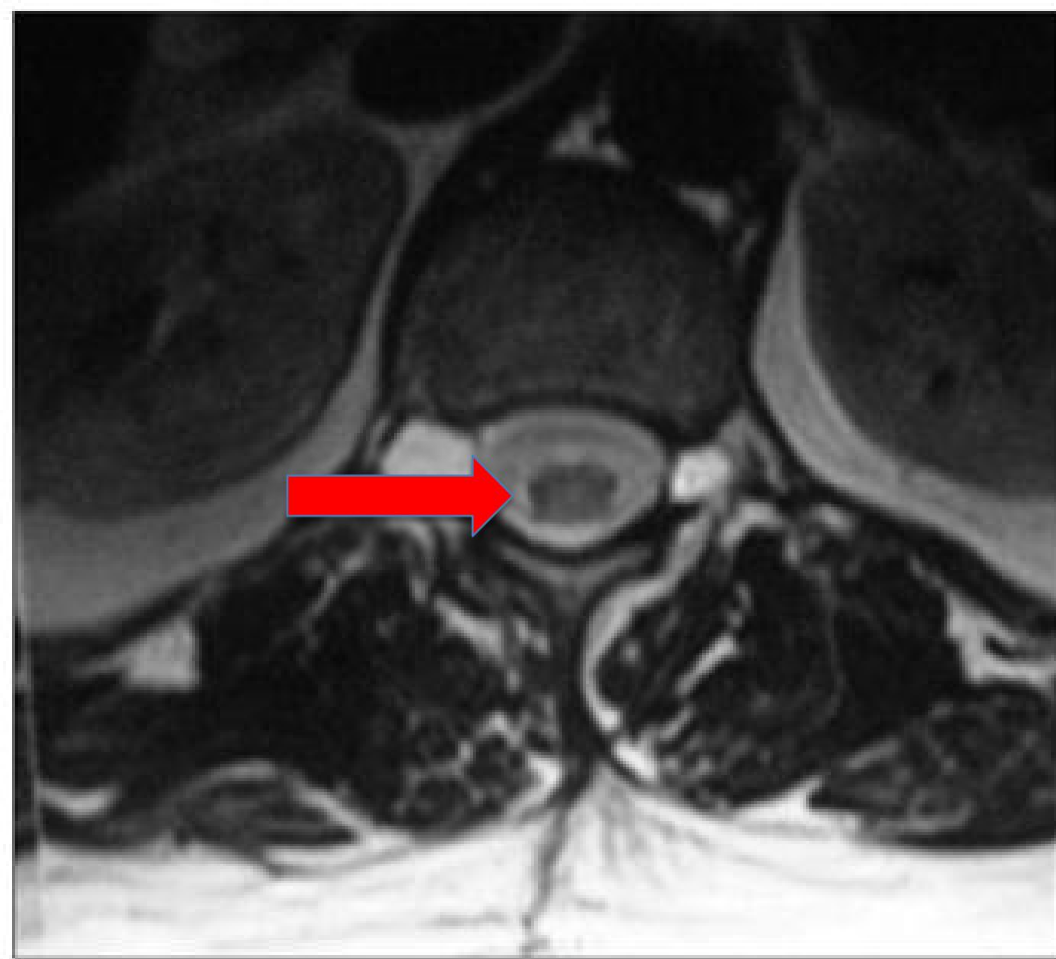


DIASTEMATOMYELIA

A CASE SERIES

SRI PAVANI

PG IN RADIODIAGNOSIS

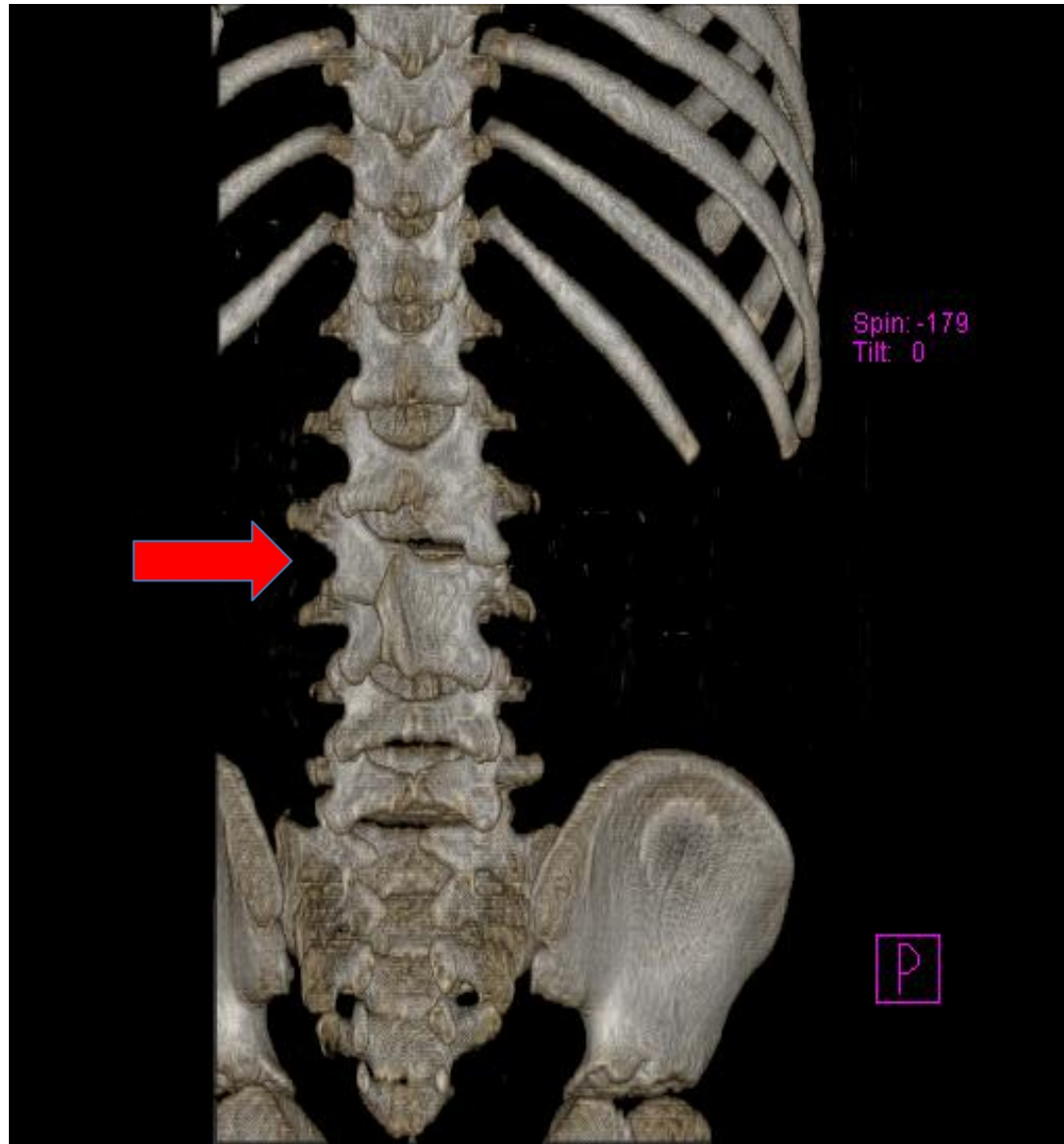


CASE 1-

- A 2 year old female child presented with abnormal gait and flat foot having mild foot drag on right side.
- This was noted by her parents from the time she started walking.
- There was no history of trauma, fever or seizures and no history suggestive of infantile hemiplegia.

- She had pes planus with the right foot slightly smaller than the left.
- She had a foot drop on the right side with mild wasting of right calf muscles with decreased tone. Knee and ankle jerks were sluggish with plantar extensor on the right side.
- Bowel and bladder habits were normal.

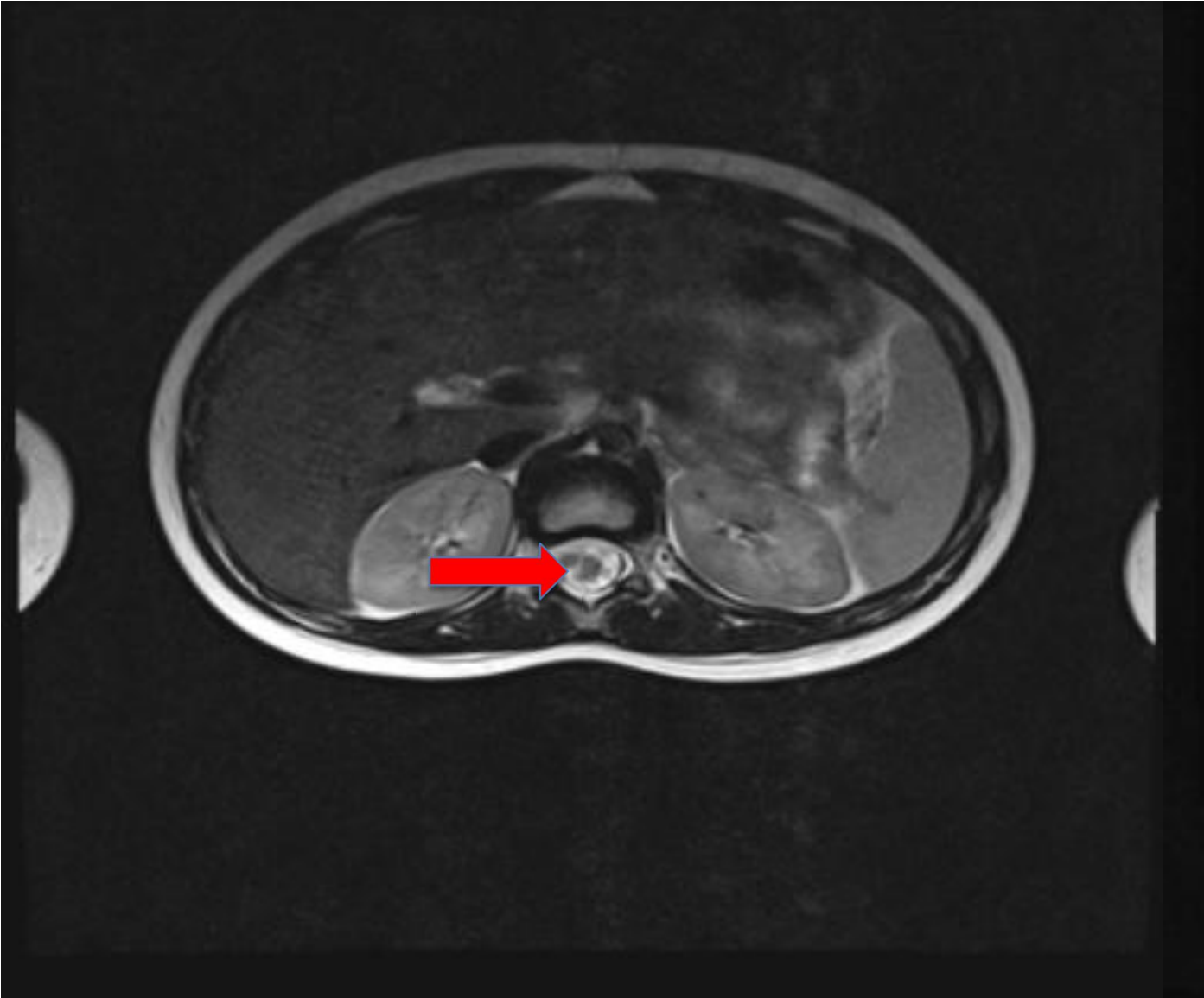
CT-



MRI-



MRI-



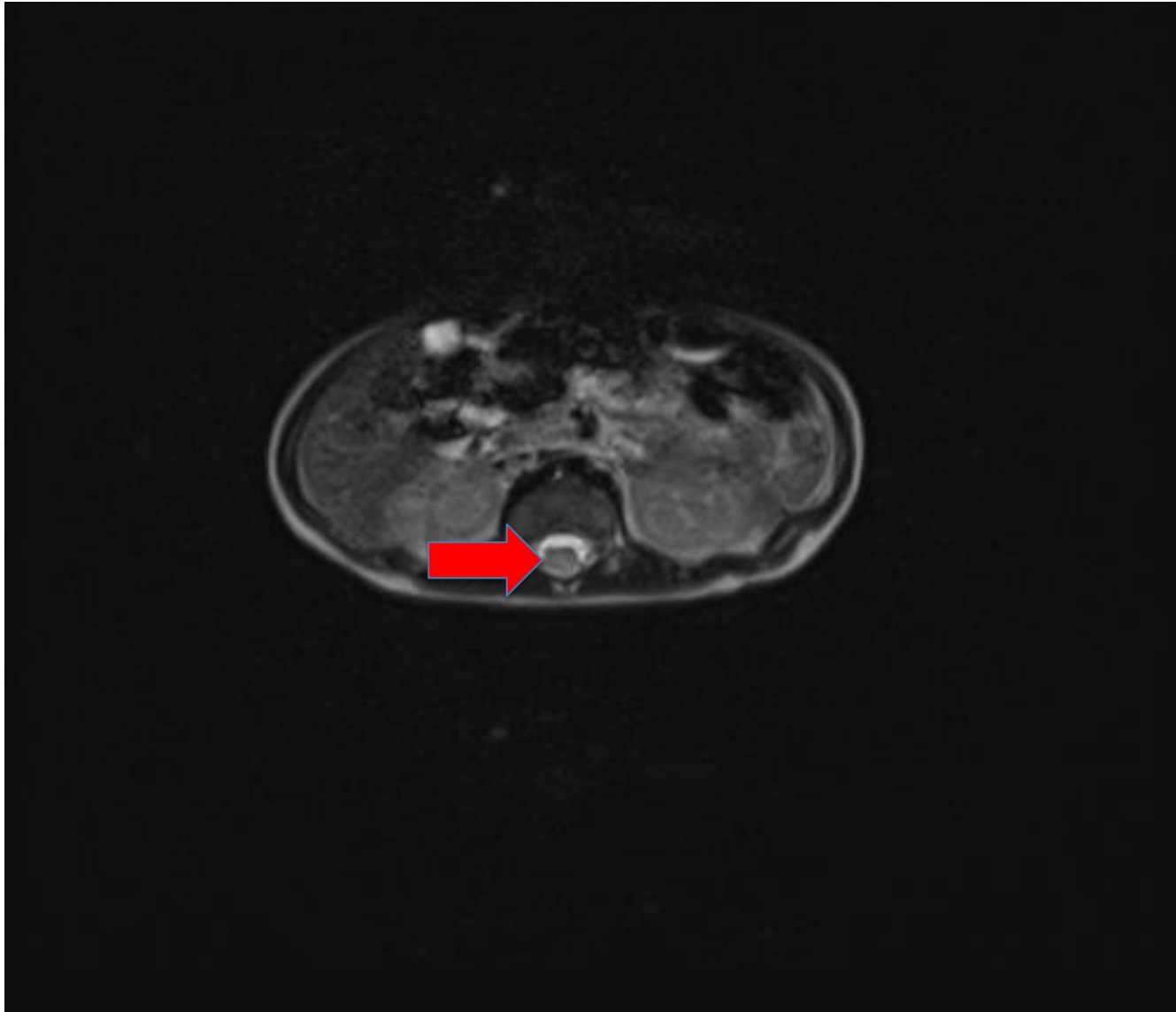
CASE 2-

- A 4 day old term female neonate presented with a sinus in the lumbar region with no other cutaneous markers.
- The baby was referred to radiology department to rule out spine and spinal cord malformations.
- Antenatal scans were normal.

RADIOLOGICAL IMAGING-

- Initially ultrasound of spine was done which showed two hemicords near the lumbar region.
- MRI was advised to confirm the diagnosis and to assess the level of cord split.

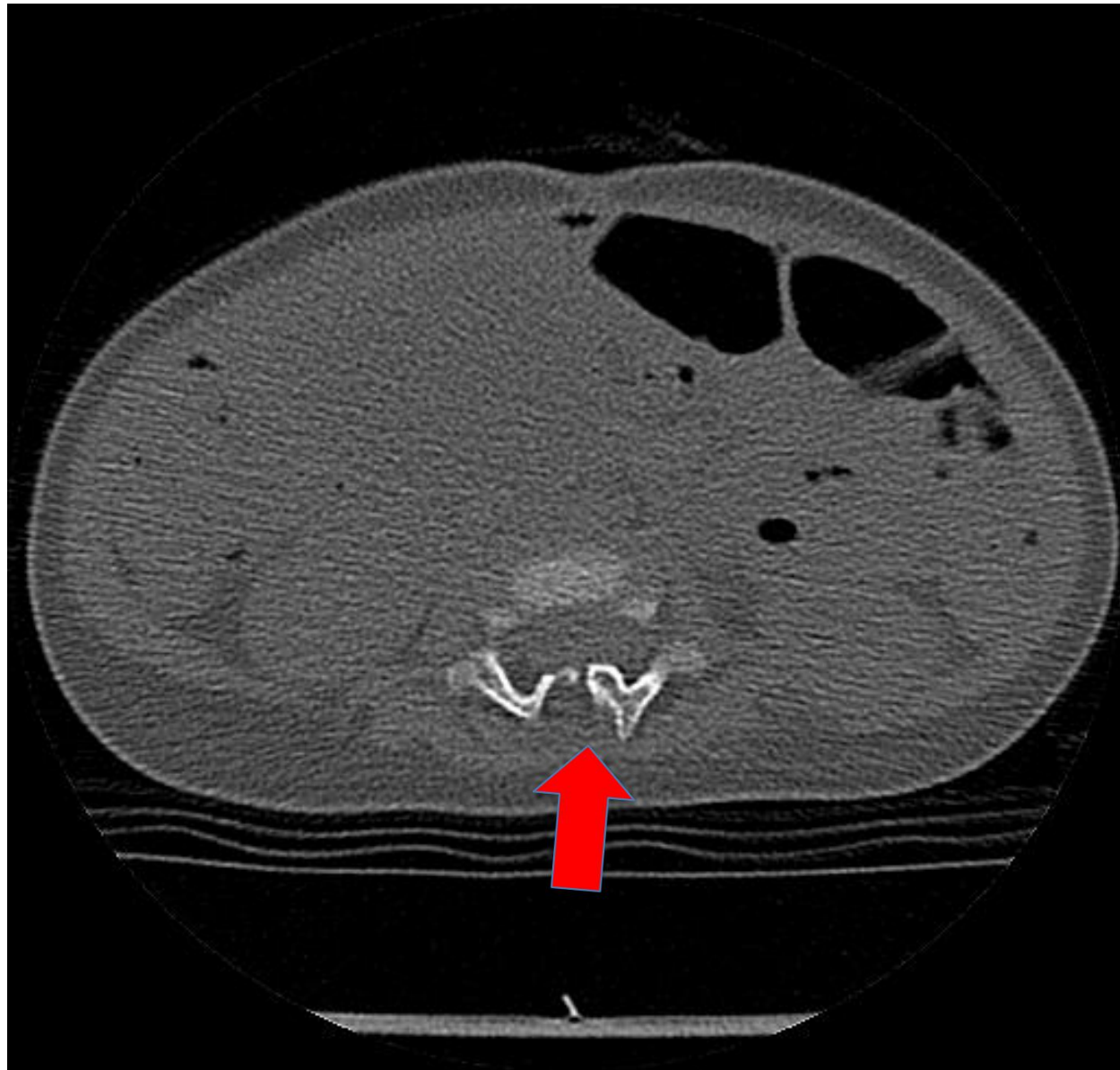
MRI-



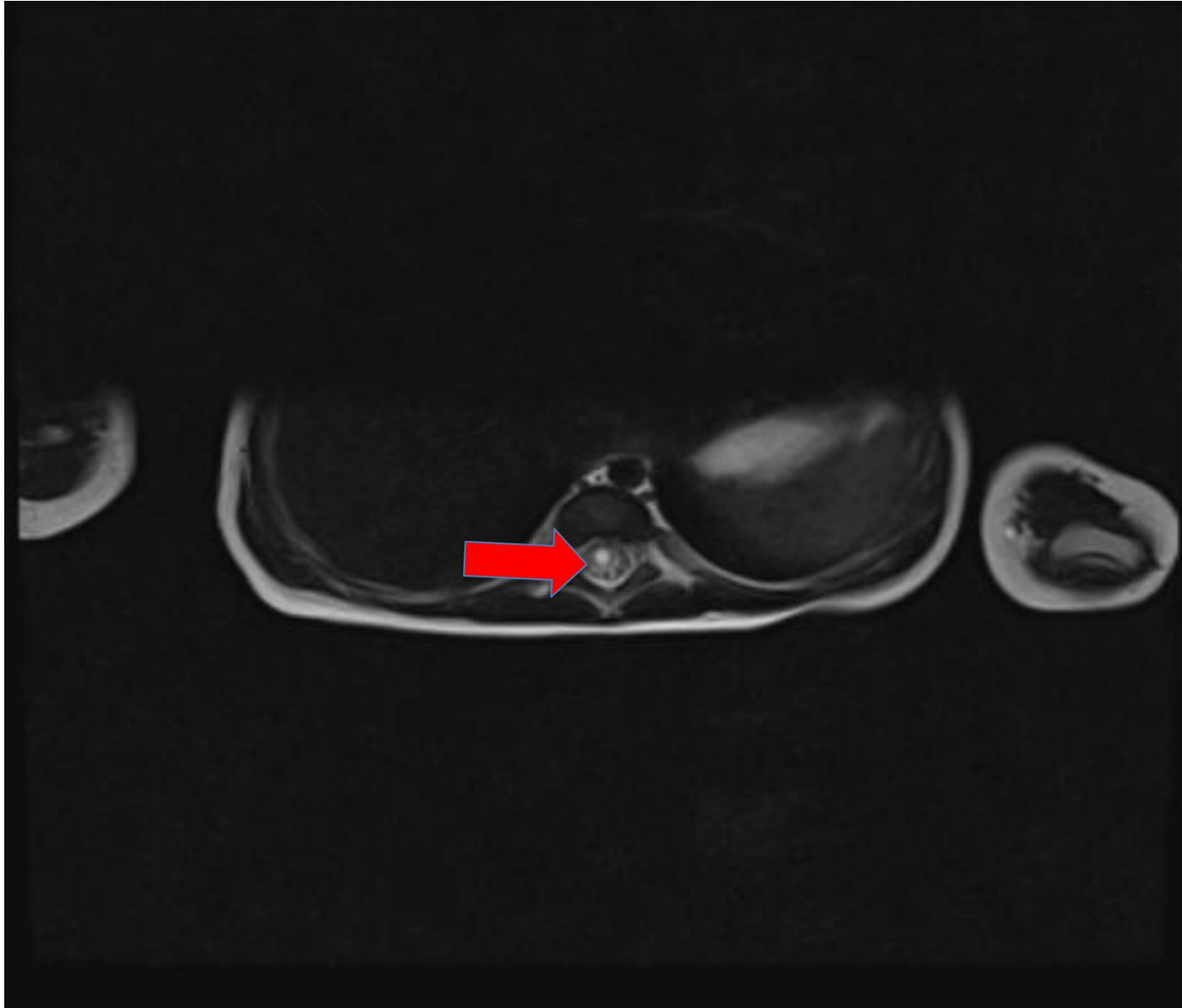
CASE 3-

- 9 months old female child presented to the pediatric department with high grade fever, cyanosis of peripheries, with one episode of seizure, cold and cough.
- Baby was treated for sepsis.
- Later on examination there was left lower limb hypotonia with paucity of movements.

CT-



MRI-





THANK YOU