

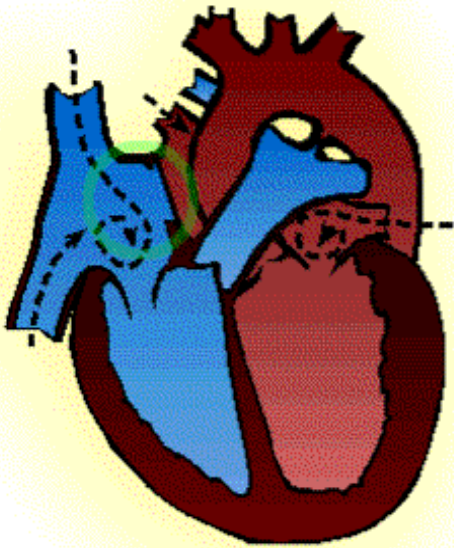
ATRIAL SEPTAL DEFECT



MANAGEMENT

BY
MANISHA EDUKULLA
6TH SEMESTER

TREATMENT



MEDICAL TREATMENT





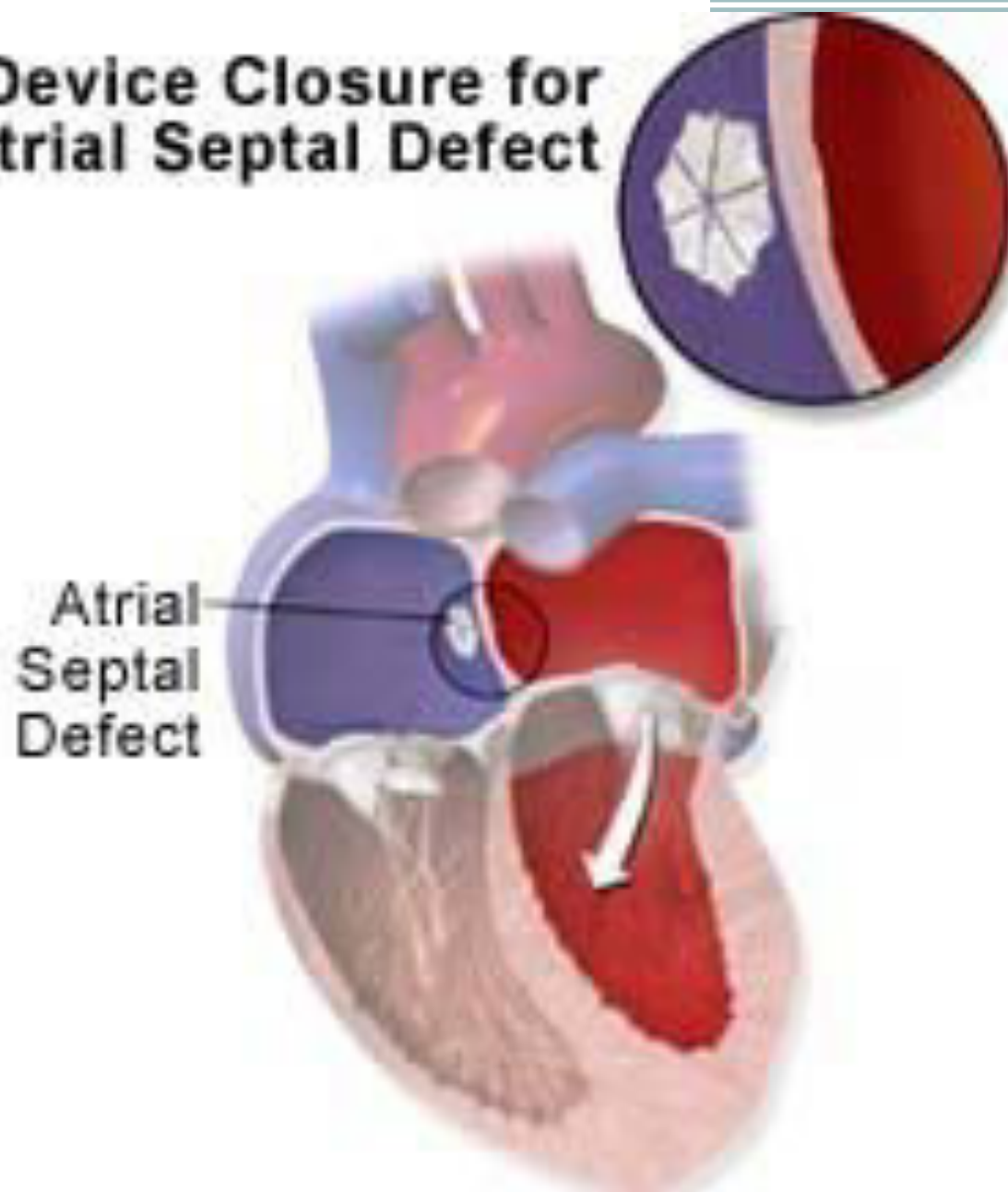
SURGICAL MANAGEMENT



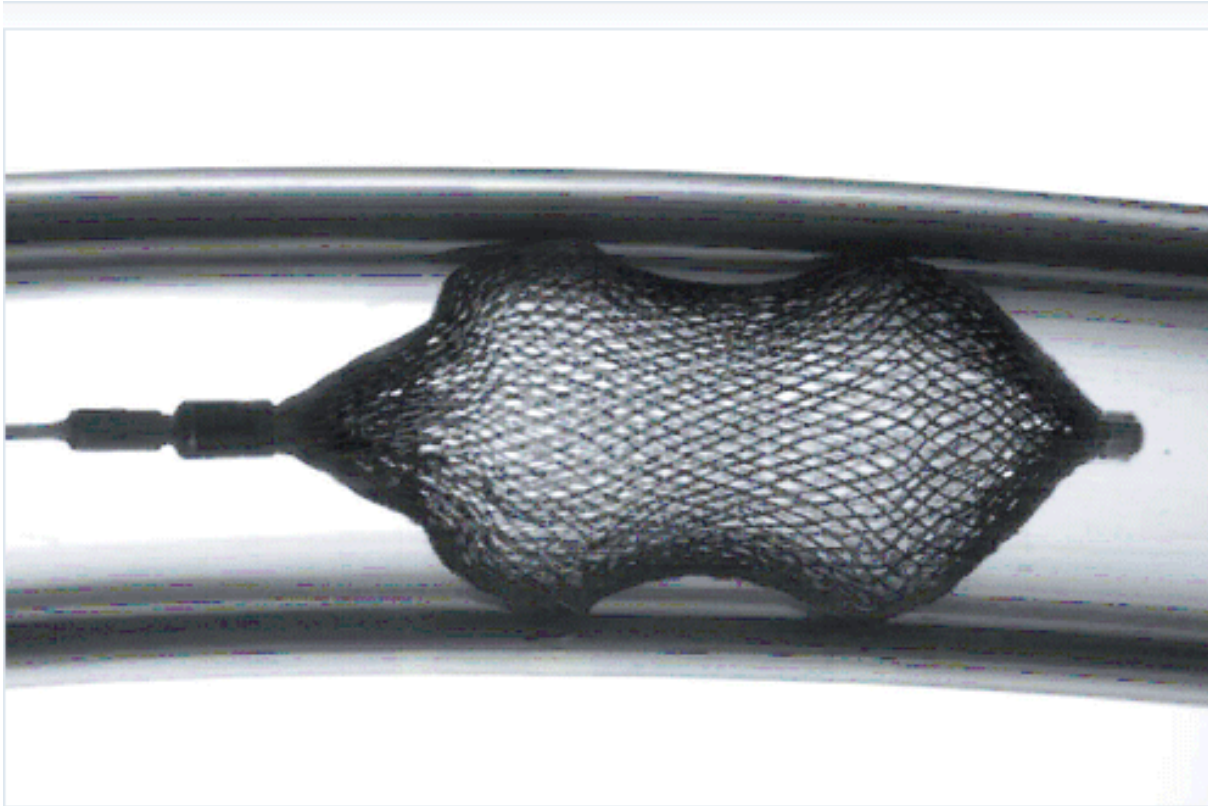
PERCUTANEOUS TRANSCATHERISATION



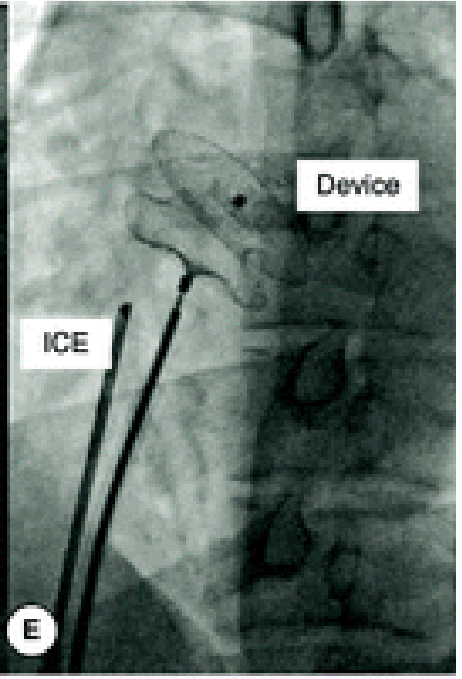
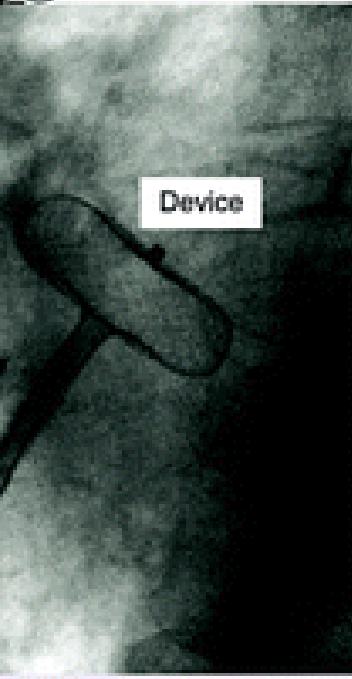
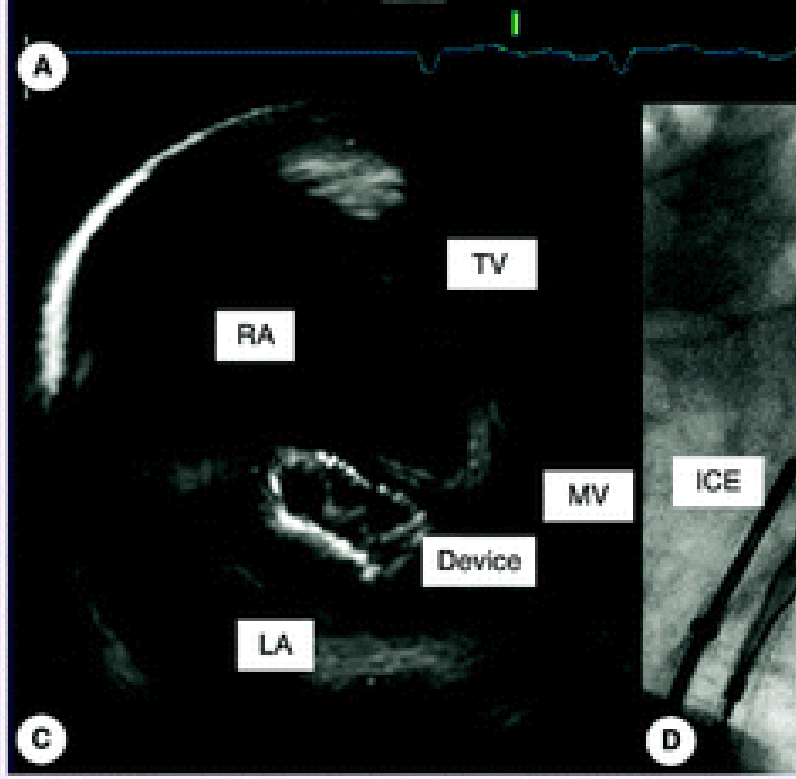
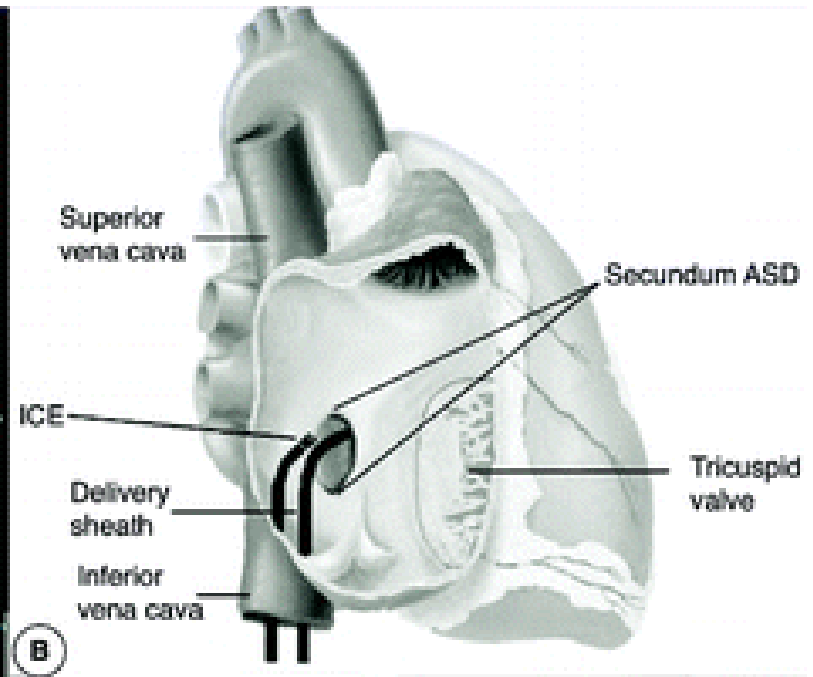
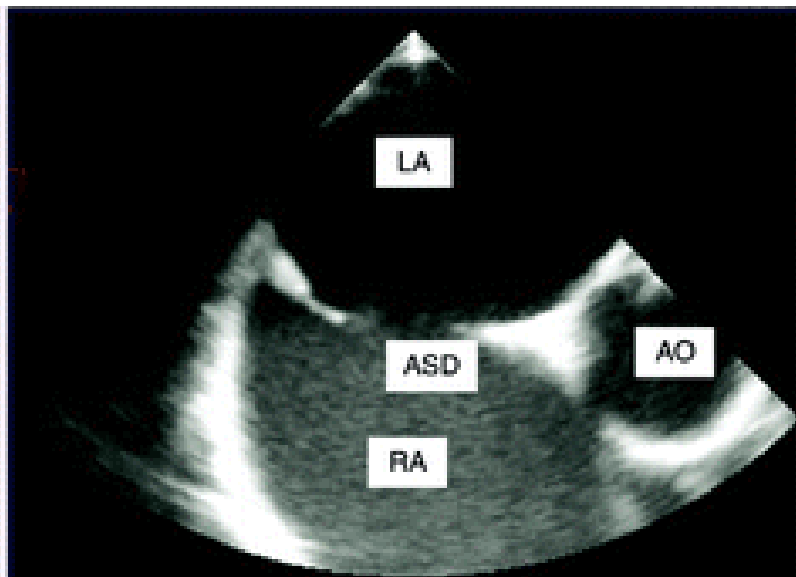
Device Closure for Atrial Septal Defect

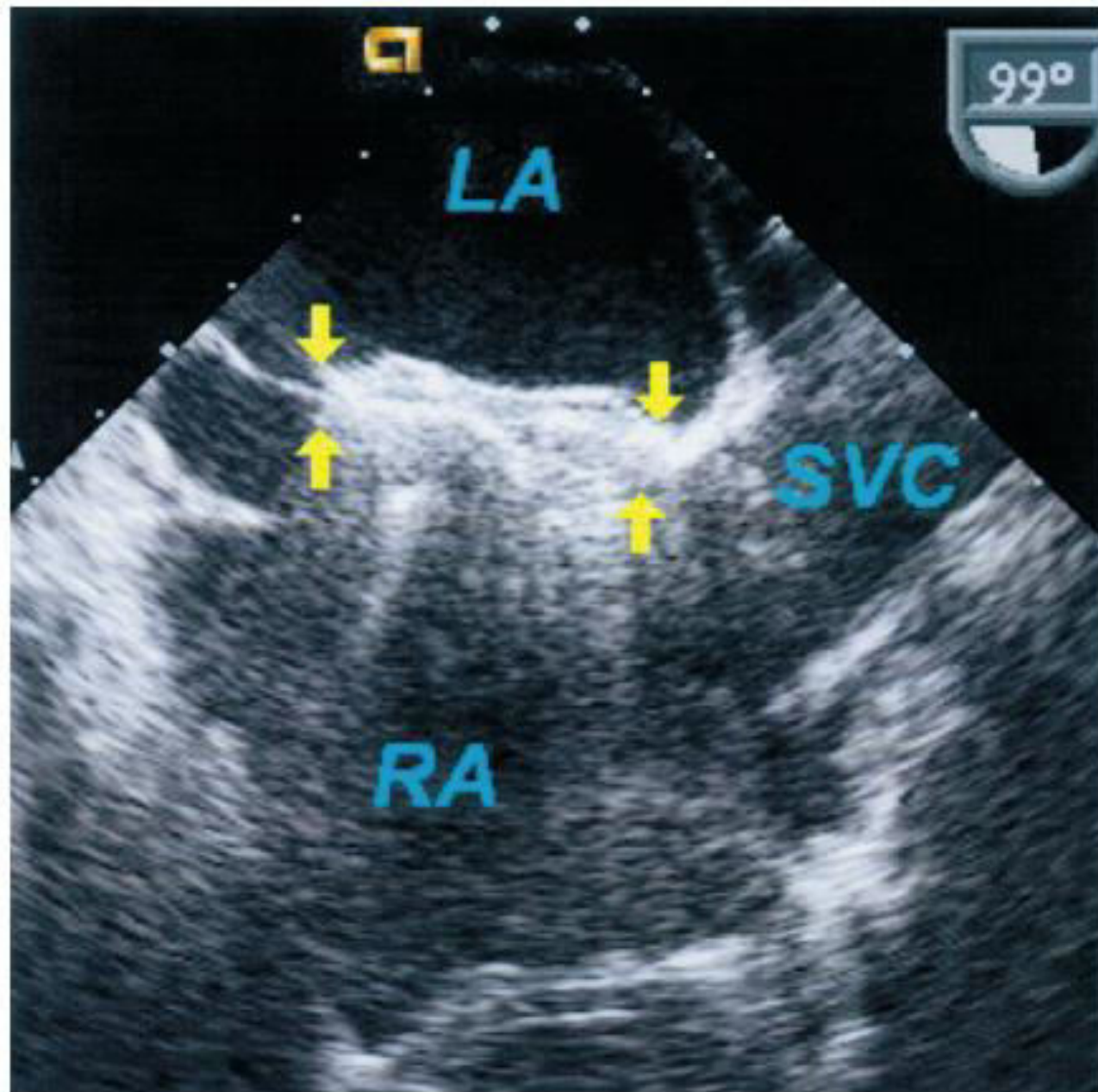


AMPLATZER DEVICE



The AMPLATZER Vascular Plug acts like a cork to securely close off blood flow in a blood vessel.





6.0cm

Live 3D
3D 28%
3D 40dB
Gen

M4



JPEG

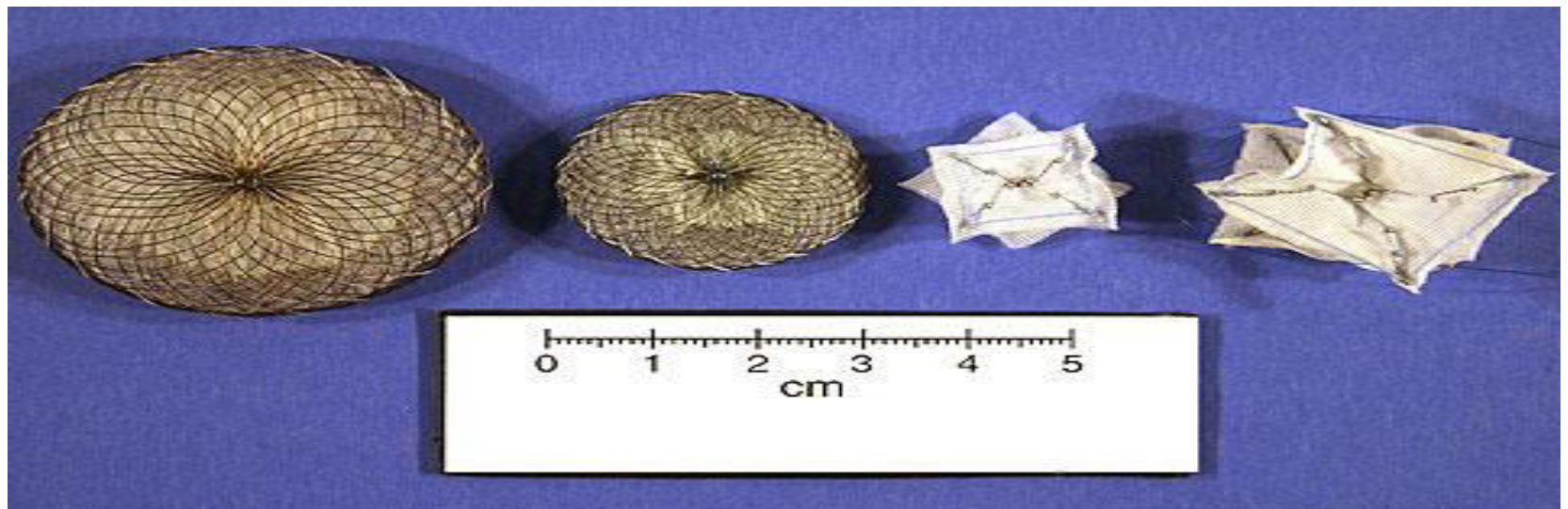
PAT T: 37.0C
TEE T: 39.3C

78 bpm

OTHER DEVICES



GORE HELEX Septal Occluder

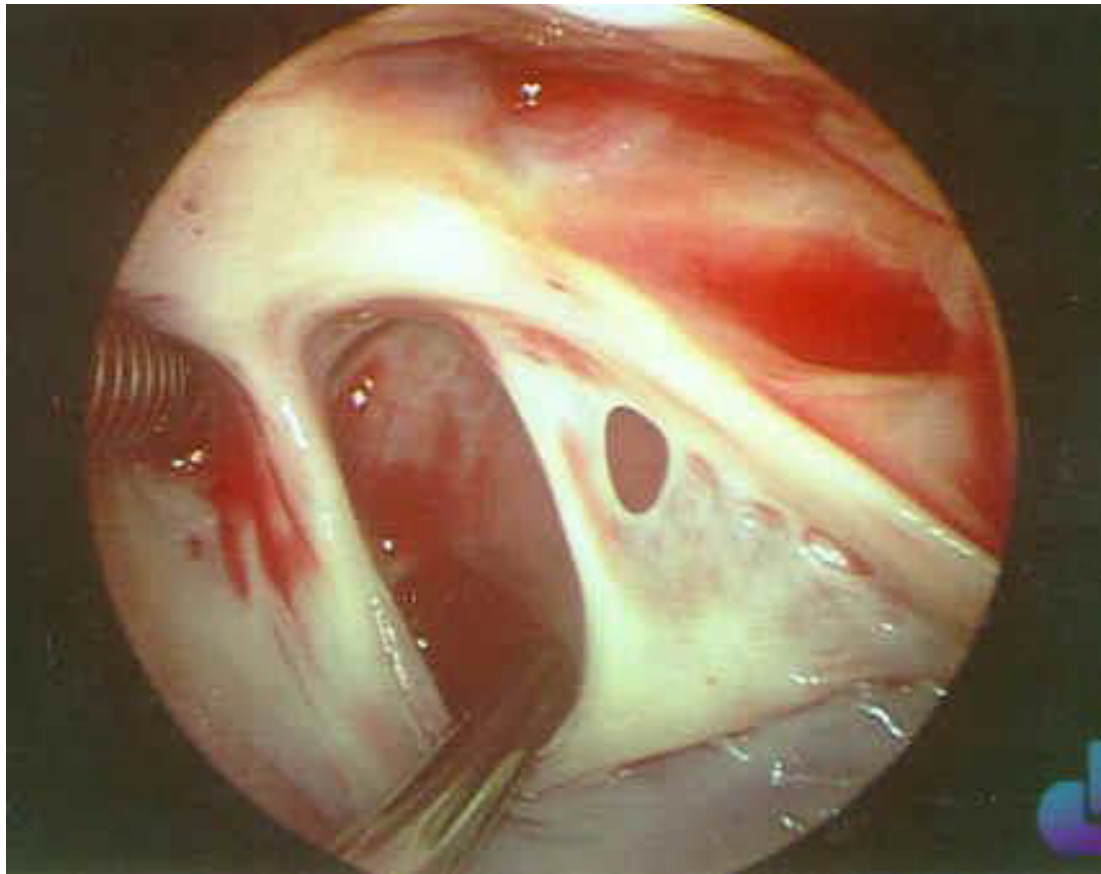


FOLLOW UP CARE

- 3, 6 and 12 months after the procedure
- Then once every year

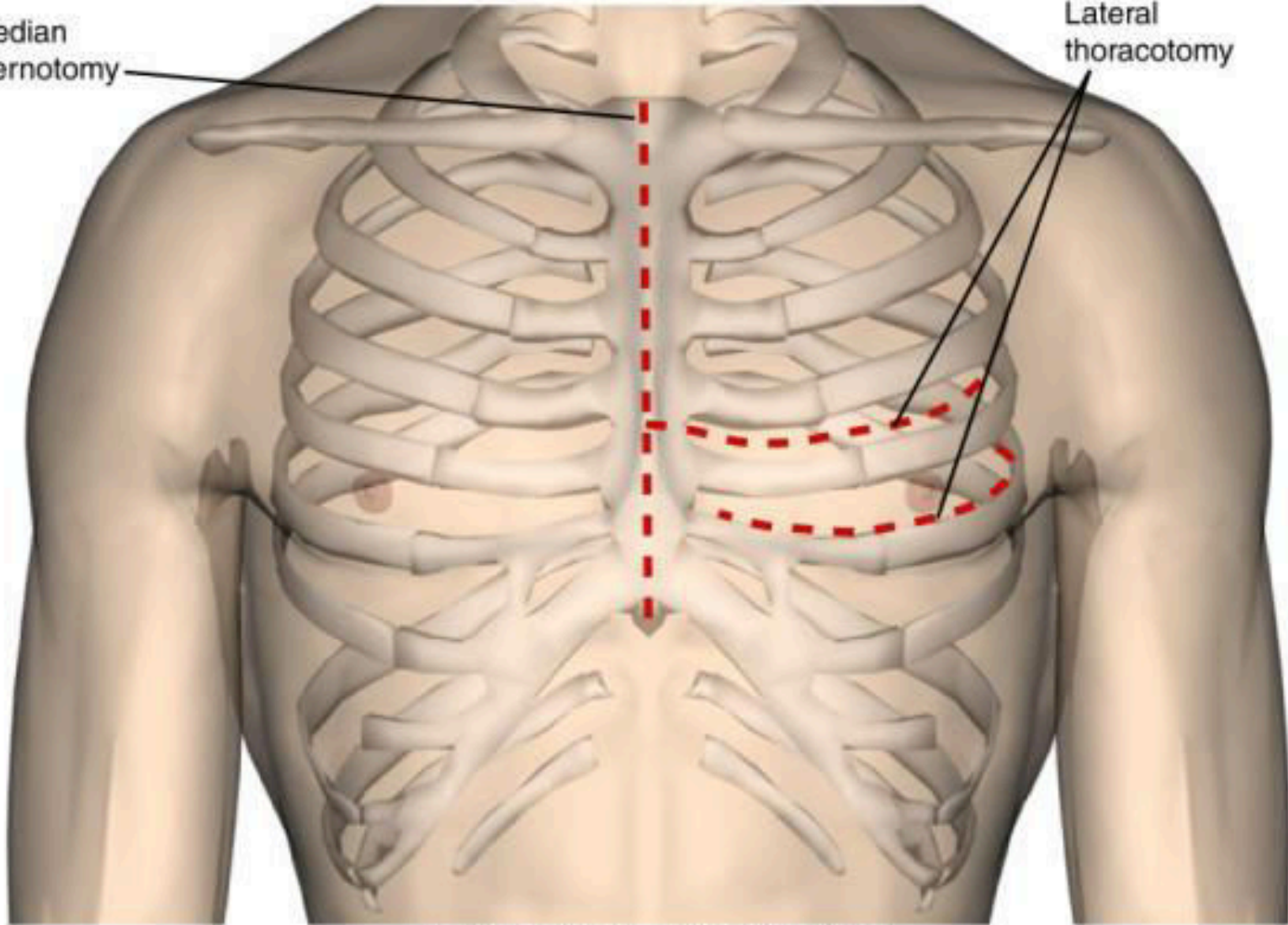


OPEN HEART SURGERY

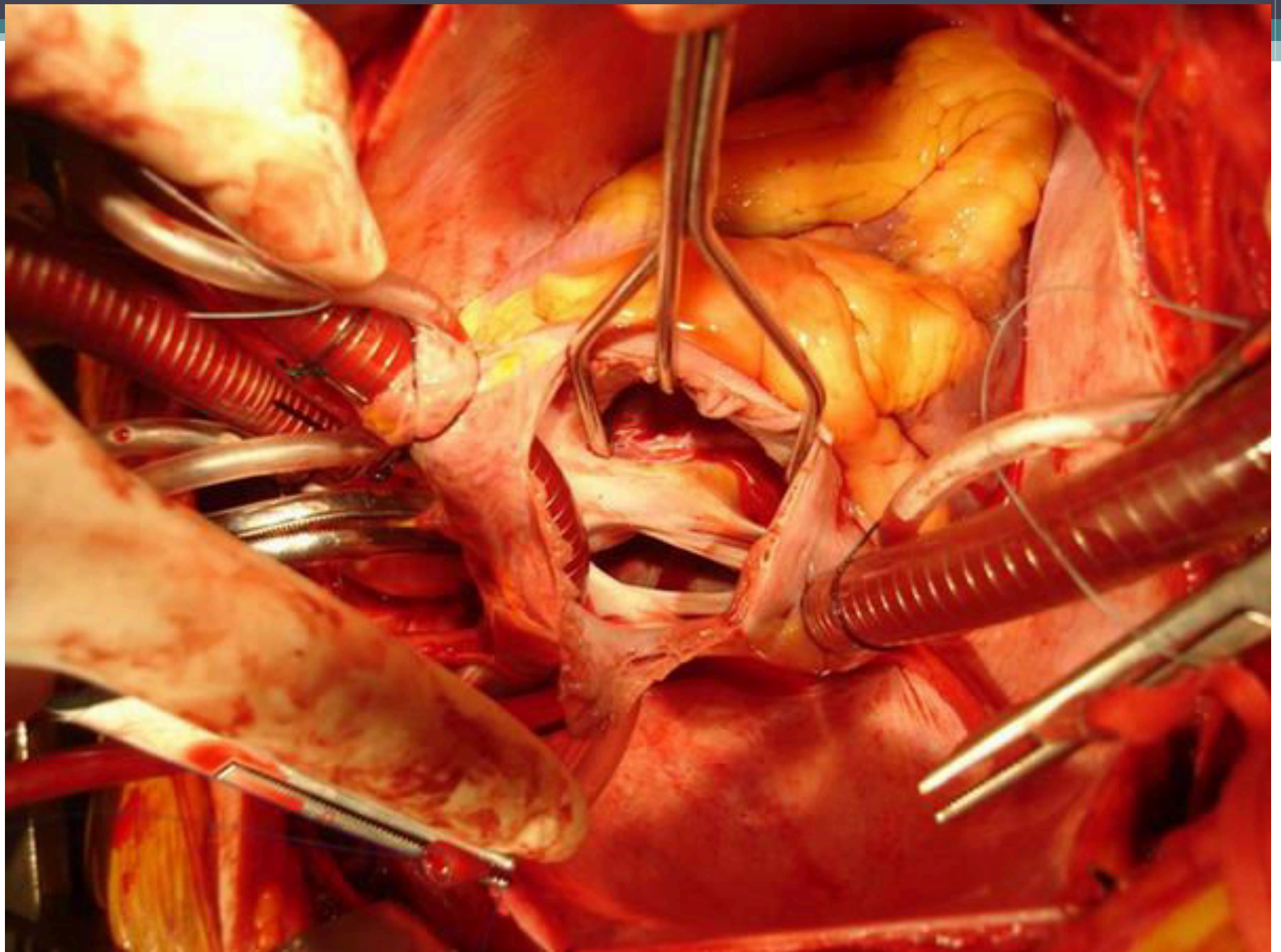


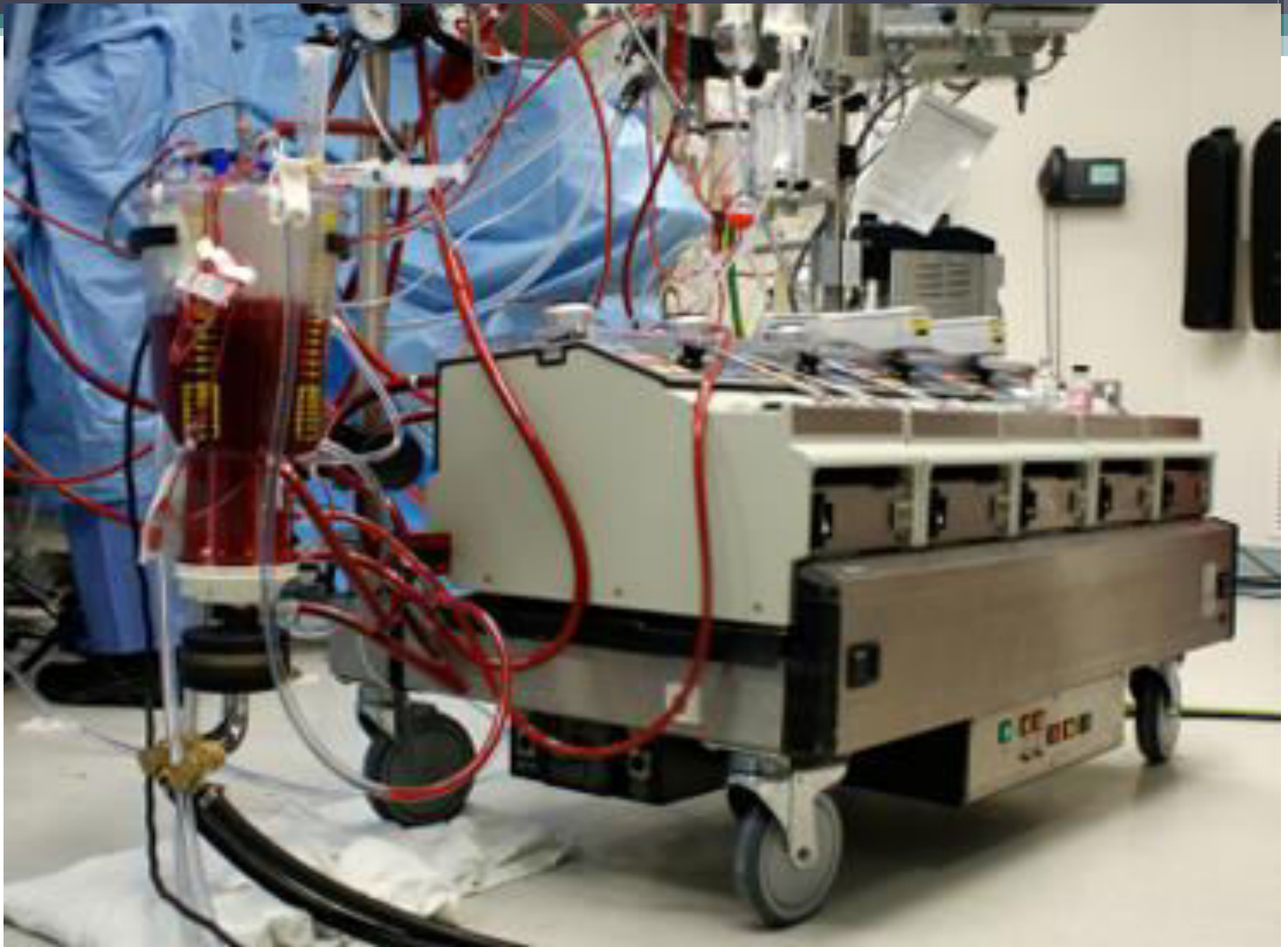
Median sternotomy

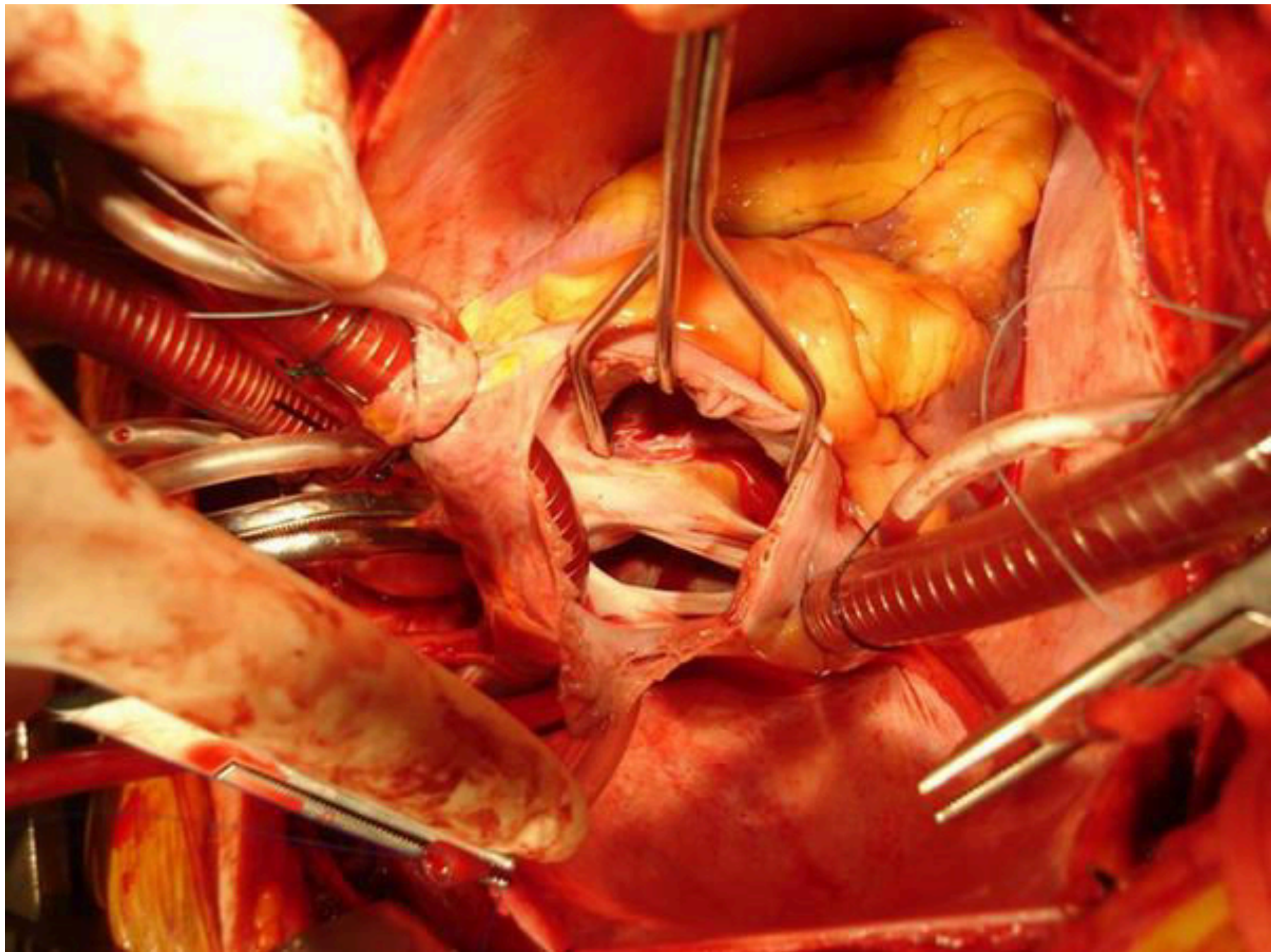
Lateral thoracotomy



Incisions for exposure of the heart



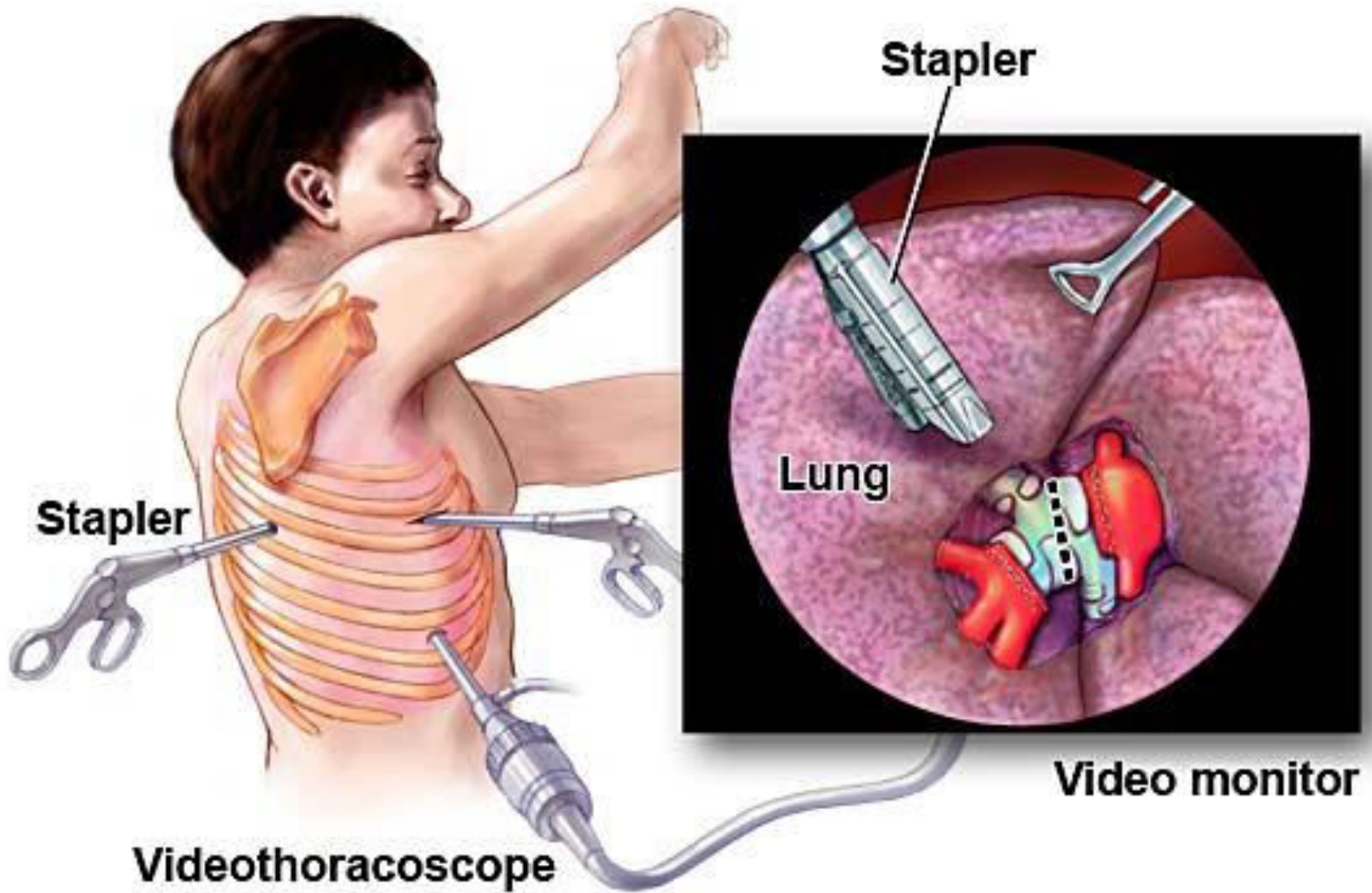


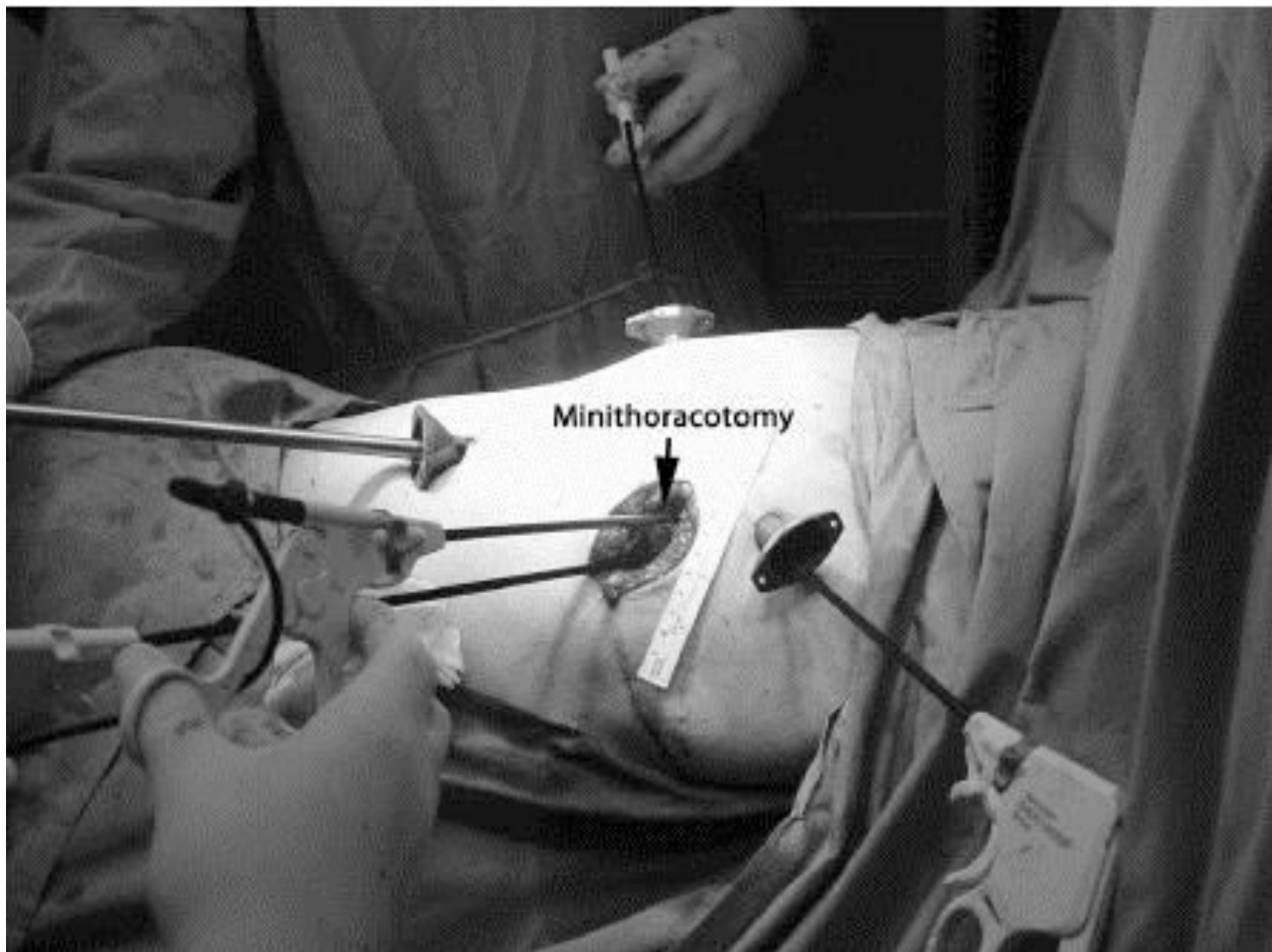




MINIMALLY INVASIVE SURGERY

VIDEO ASSISTED THORACOSCOPY





Minithoracotomy

DA VINCI ROBOTIC SURGERY



REFERENCES

- <http://www.ncbi.nlm.nih.gov/pubmed/11773692>
- <http://circ.ahajournals.org/content/114/15/1645.long#sec-15>
- <http://www.cps.ca/documents/position/infective-endocarditis-guidelines>
- <http://www.pcronline.com/Lectures/2011/Percutaneous-transcatheter-closure-of-interatrial-septal-defect-in-adults-procedural-outcome-and-long-term-results>

REFERENCES

- [http://www.tchin.org/resource room/c art 14.htm](http://www.tchin.org/resource_room/c_art_14.htm)
- [http://my.clevelandclinic.org/disorders/atrial sept al defect/hic how is an atrial septal defect asd closed using a catheter-based procedure.aspx](http://my.clevelandclinic.org/disorders/atrial_septal_defect/hic_how_is_an_atrial_septal_defect_asd_closed_using_a_catheter-based_procedure.aspx)
- [http://my.clevelandclinic.org/disorders/atrial sept al defect/hic atrial septal defect asd.aspx](http://my.clevelandclinic.org/disorders/atrial_septal_defect/hic_atrial_septal_defect_asd.aspx)
- [http://bestpractice.bmj.com/best-practice/monograph/1099/basics/classification.htm l](http://bestpractice.bmj.com/best-practice/monograph/1099/basics/classification.html)
- [http://circ.ahajournals.org/content/114/15/1645/T1 .expansion.html](http://circ.ahajournals.org/content/114/15/1645/T1.expansion.html)
- <http://adc.bmj.com/content/89/7/687.full>

THANK YOU

